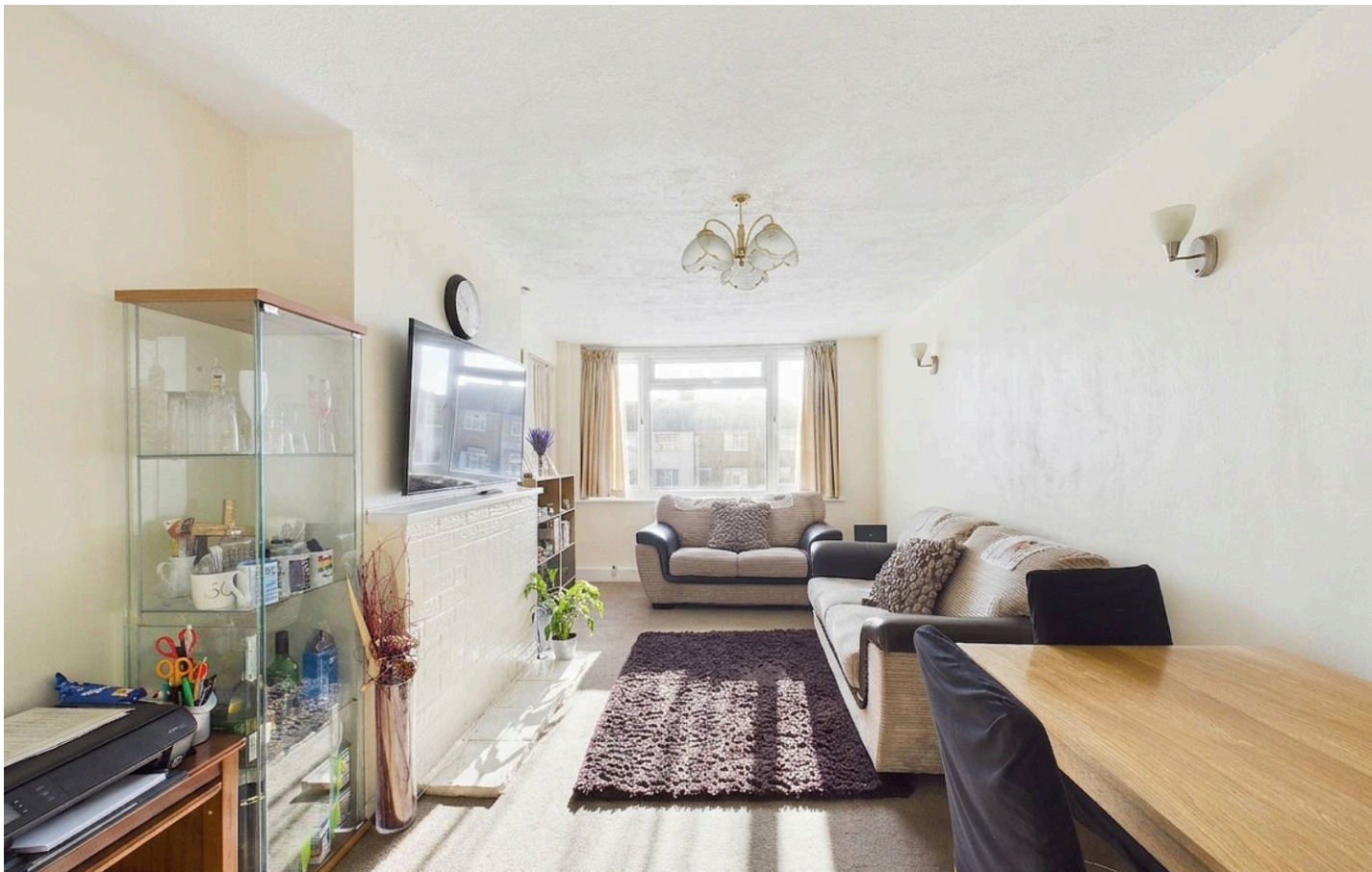




Sheridan Court, 736 Whitton Avenue West – UB5 4JU
£300,000



LAWRENCE RAND



Key Features & Description

- Three Bedrooms
- Balcony
- Garage
- Top Floor Flat

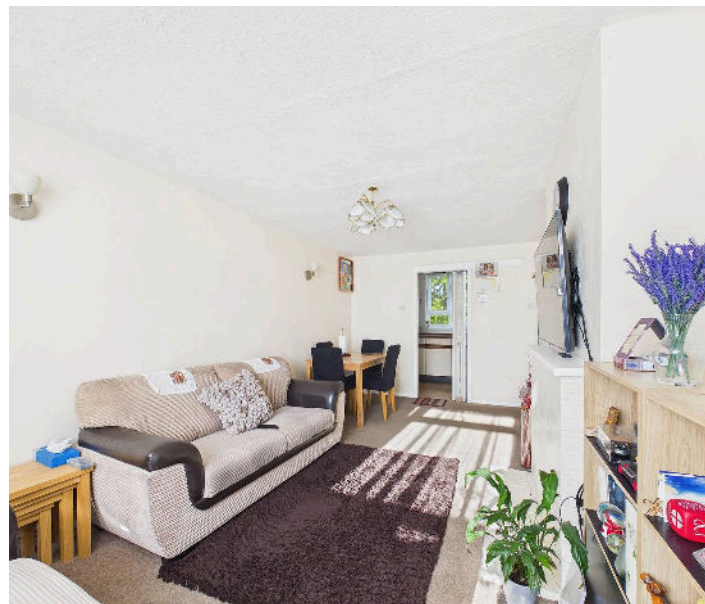
Set within Sheridan Court, this spacious three-bedroom top floor flat offers well-balanced accommodation with plenty of natural light throughout, making it an excellent choice for families, first-time buyers, or investors.

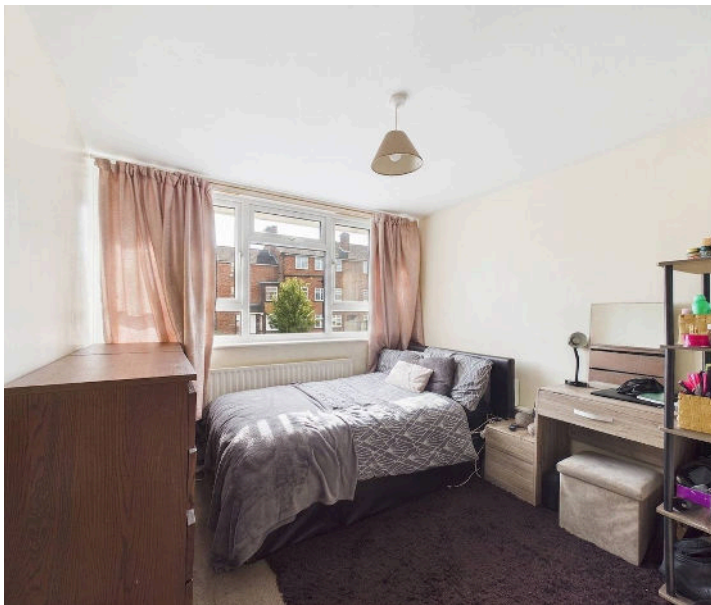
The property features a generous living room, providing a comfortable space for both relaxing and dining. A separate kitchen is well laid out with ample storage and work surfaces, and is complemented by a useful adjoining utility room.

There are three bedrooms, including two good-sized doubles and a third room that would suit a child's bedroom, guest room, or home office. The flat is arranged to provide a practical flow, with a centrally positioned bathroom, separate hallway sections, and additional built-in storage.

Occupying a top floor position, the flat benefits from a quieter setting and an elevated aspect. Sheridan Court is conveniently located on Whitton Avenue, within easy reach of local amenities, schools, green spaces, and transport connections.

Presented with care by Lawrence Rand - helping you find the place you'll love to call home.





Nearest Stations

Northolt Station - approx 0.2 miles

Northolt Park Station - approx 0.6 miles

Greenford Station- approx 1.0 mile

Verified Material Information:

Council Tax band: C

EPC Energy Efficiency Rating: TCB

Ground Rent £10 PA

Service Charge 124 Per Month

Lease Years Remaining 85 Years

Suppliers:

Electricity supply: Mains,

Water supply: Mains water

Sewerage: Mains

Heating: Gas Central

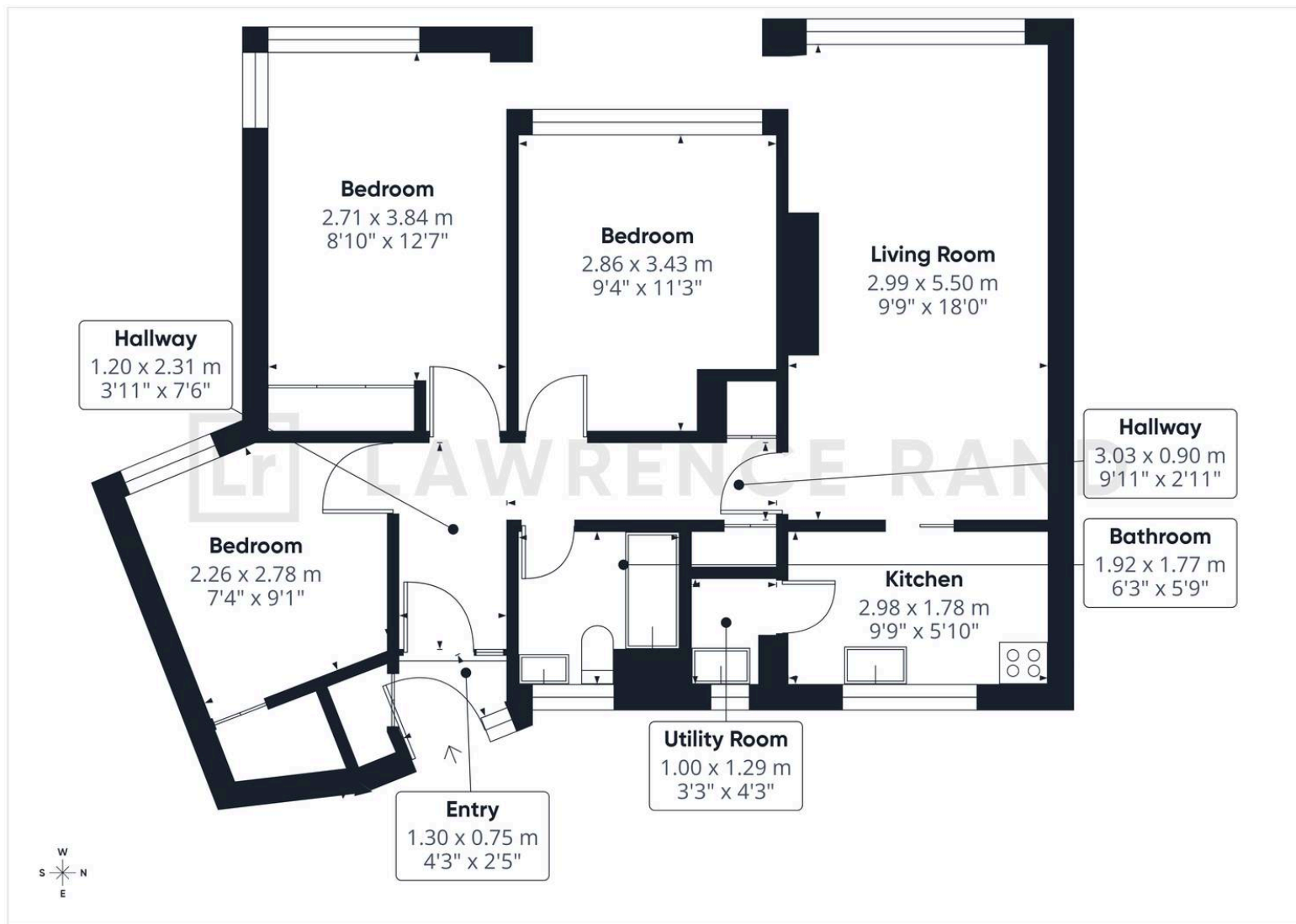
Broadband & mobile coverage:

Broadband: FTTP (Fibre to the Premises)

Mobile coverage: O2 - Excellent,

Vodafone - Excellent,

Three - Excellent, EE Excellent



Lawrence Rand

51 Victoria Road, Ruislip - HA4 9BH

01895 632211

sales@lawrence-rand.co.uk

www.lawrence-rand.co.uk

Lawrence Rand Limited has made every reasonable effort to ensure the accuracy of the information provided. However, we accept no responsibility for errors, omissions, or misstatements. All measurements, distances, and descriptions are approximate and for guidance only. Prospective purchasers or tenants must verify all details independently. Some images may include AI-generated virtual staging to illustrate the potential of the property and are for visual guidance only. No warranty is given or implied, and these particulars do not form part of any offer or contract. Lawrence Rand reserves the right to amend or withdraw any property without notice.