



Ennismore Avenue, Greenford - UB6 0JN

Guide Price **£560,000** | Freehold



LAWRENCE RAND



Key Features & Description

- Three Bedrooms
- Terraced
- Chain Free
- Driveway

Situated on a quiet residential road in the heart of Greenford, this well-presented three-bedroom terraced home offers bright and spacious accommodation throughout, making it an ideal purchase for first-time buyers, growing families or investors alike.

The ground floor comprises a welcoming entrance hallway, a generous reception room with ample space for both living and dining, and a fitted kitchen overlooking the rear garden. The property further benefits from a private rear garden, perfect for outdoor entertaining and family enjoyment.

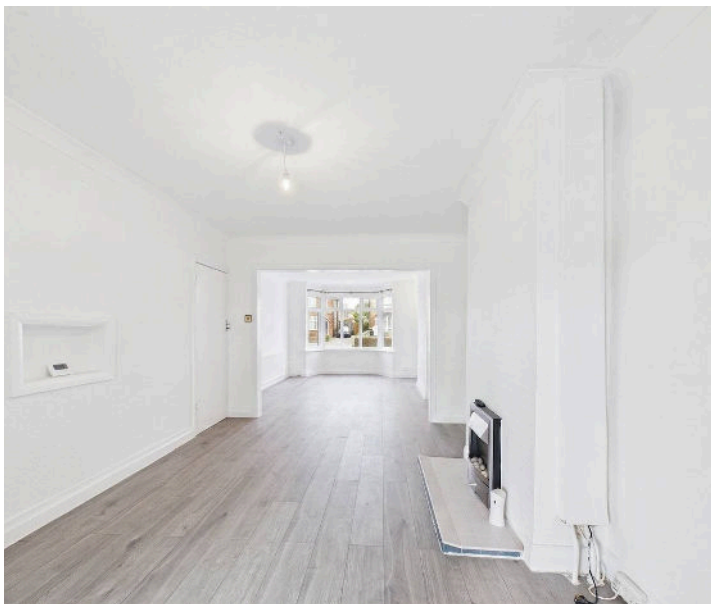
To the first floor are three well-proportioned bedrooms and a family bathroom, providing comfortable and versatile living accommodation throughout.

Ennismore Avenue is conveniently located close to a range of local amenities, schools and transport links. Nearby stations include Greenford Station and Sudbury Hill Station, offering excellent connections into Central London via the Central and Piccadilly lines, as well as National Rail services. The property also benefits from easy access to the A40, making commuting by road simple and convenient.

Presented with care by Lawrence Rand – helping you find the place you'll love to call home.

Verified Material Information:

Council Tax band: D





Nearest Stations

Sudbury Hill – approx 0.4 miles

Sudbury Hill Harrow – approx 0.5 miles

Greenford – approx 0.7 miles

Verified Material Information:

Council Tax band: D

EPC Energy Efficiency Rating: E

Suppliers:

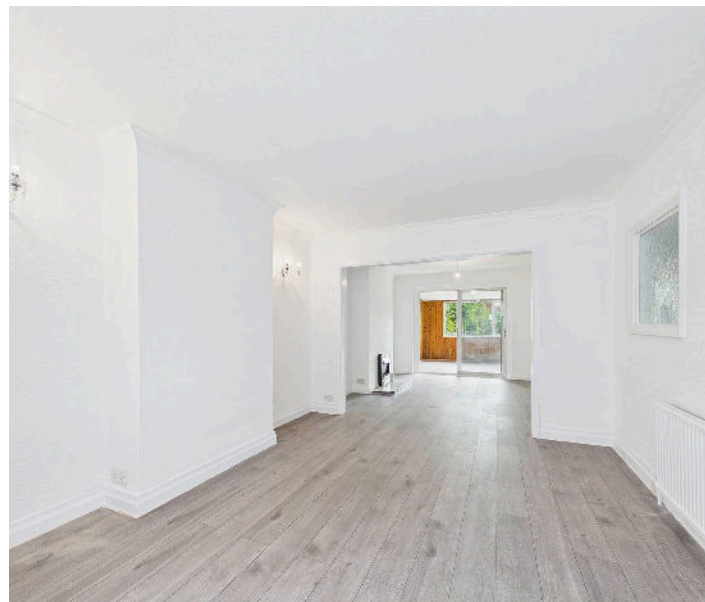
Electricity supply: Mains, Water supply: Mains
water, Sewerage: Mains

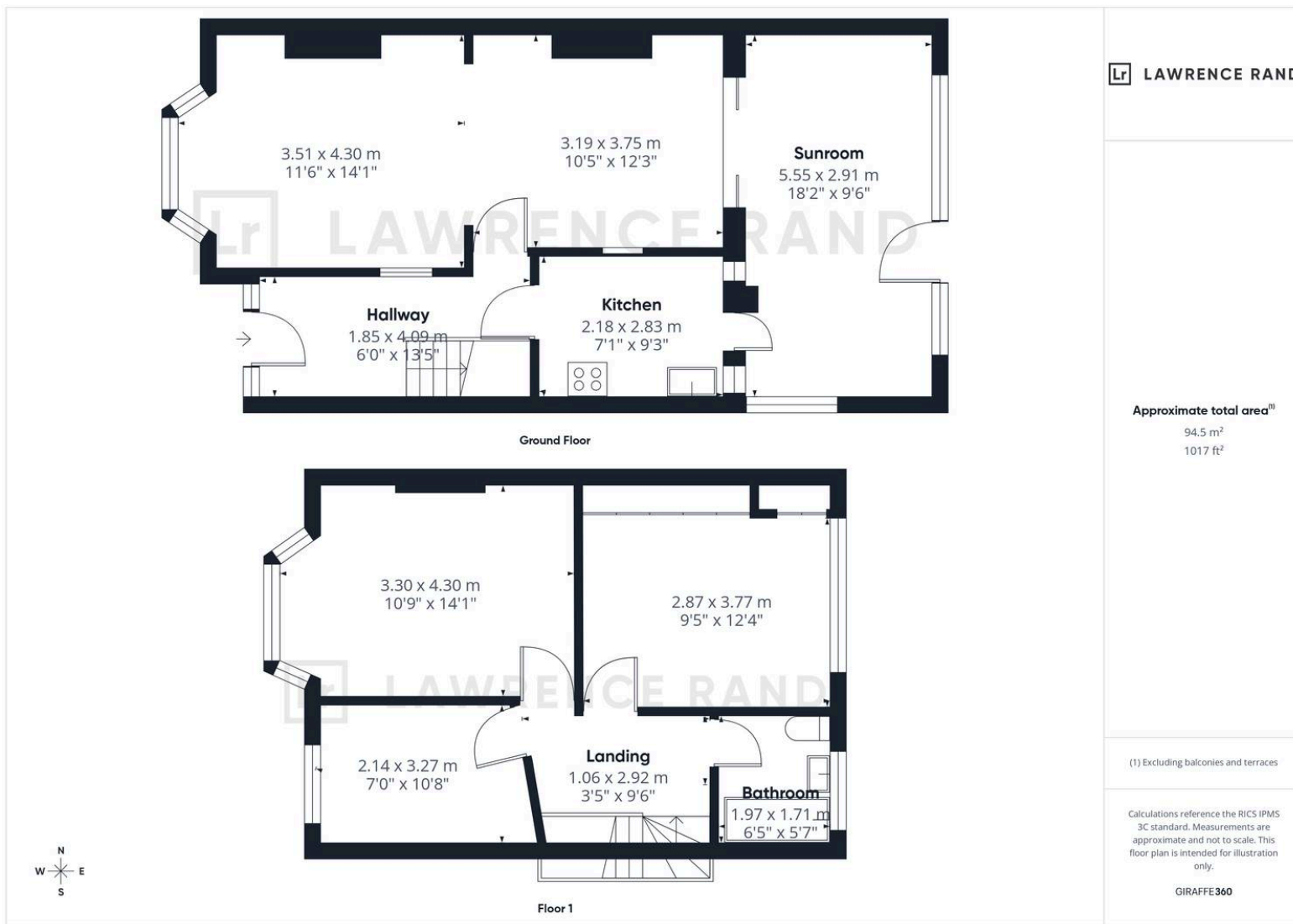
Heating: Gas central heating

Broadband & mobile coverage:

Broadband: FTTP (Fibre to the Premises)

Mobile coverage: O2 – Excellent, Vodafone –
Excellent, Three – Excellent, EE – Excellent





Lawrence Rand
 51 Victoria Road, Ruislip - HA4 9BH
 01895 632211
 sales@lawrence-rand.co.uk
 www.lawrence-rand.co.uk/

Lawrence Rand Limited has made every reasonable effort to ensure the accuracy of the information provided. However, we accept no responsibility for errors, omissions, or misstatements. All measurements, distances, and descriptions are approximate and for guidance only. Prospective purchasers or tenants must verify all details independently. Some images may include AI-generated virtual staging to illustrate the potential of the property and are for visual guidance only. No warranty is given or implied, and these particulars do not form part of any offer or contract. Lawrence Rand reserves the right to amend or withdraw any property without notice.