



LAWRENCE RAND

26 The Drive, Ickenham
£3,900 pcm

26 The Drive

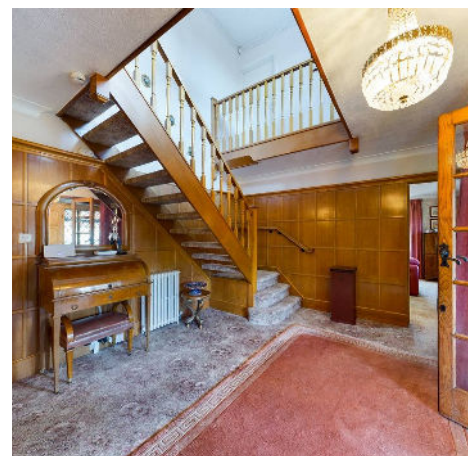
Ickenham, Uxbridge

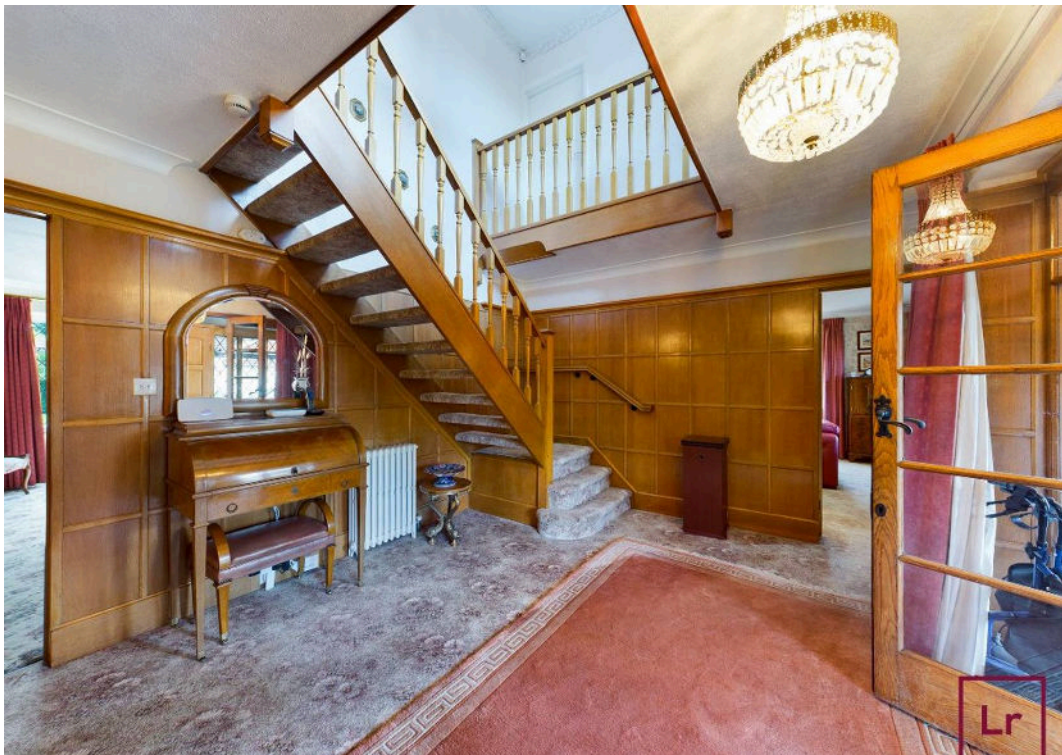
- FIVE DOUBLE BEDROOMS
- TWO BATHROOMS
- BEAUTIFUL REAR GARDEN
- GATED DETACHED FAMILY HOME
- PRESTIGIOUS PRIVATE ROAD
- DRIVEWAY WITH AMPLE PARKING
- GARAGE
- CLOSE TO HILLINGDON UNDERGROUND STATION

This substantial FIVE BEDROOM detached family home TO RENT. Offering spacious and versatile accommodation throughout, the property is ideal for tenants seeking ample indoor and outdoor space.

Accessed via electric gates, the property is approached by a sweeping driveway providing extensive parking, along with access to both a detached garage and an integral double garage. The front door opens into a grand and spacious entrance hall, featuring wood panelling and a staircase leading to the first floor. The ground floor accommodation includes a large living room that flows into a conservatory with delightful views over the rear garden. There is also a sizeable second reception room, currently used as a dining room, a shower room, and a well-proportioned study, ideal for home working. The fitted kitchen connects to a utility room and an additional versatile space currently arranged as a bar area and doors opening onto a garage. This area further leads into a generous sized bedroom, offering flexible living options.

Upstairs, the galleried landing features a large picture window overlooking the landscaped front







You can include any text here. The text can be modified upon generating your brochure.





Ground Floor Building 1

Approximate total area⁽¹⁾

3456.50 ft²

321.12 m²

Reduced headroom

10.27 ft²

0.95 m²



Floor 1 Building 1

(1) Excluding balconies and terraces

 Reduced headroom (below 1.5m/4.92ft)

While every attempt has been made to ensure accuracy, all measurements are approximate, not to scale. This floor plan is for illustrative purposes only.

GIRAFFE360



Lawrence Rand

51 Victoria Road, Ruislip - HA4 9BH

01895 632211 • Info@lawrence-rand.co.uk • www.lawrence-rand.co.uk/

Lawrence Rand Limited has made every reasonable effort to ensure the accuracy of the information provided. However, we accept no responsibility for errors, omissions, or misstatements. All measurements, distances, and descriptions are approximate and for guidance only. Prospective purchasers or tenants must verify all details independently. Some images may include AI-generated virtual staging to illustrate the potential of the property and are for