



Dell Farm Road, Ruislip – HA4 7TX

Guide Price **£325,000** | Leasehold



LAWRENCE RAND



Key Features & Description

- Two Bedroom
- Spacious Reception Room
- Garage
- Top Floor Flat
- Close To Ruislip Lido
- Fitted Kitchen

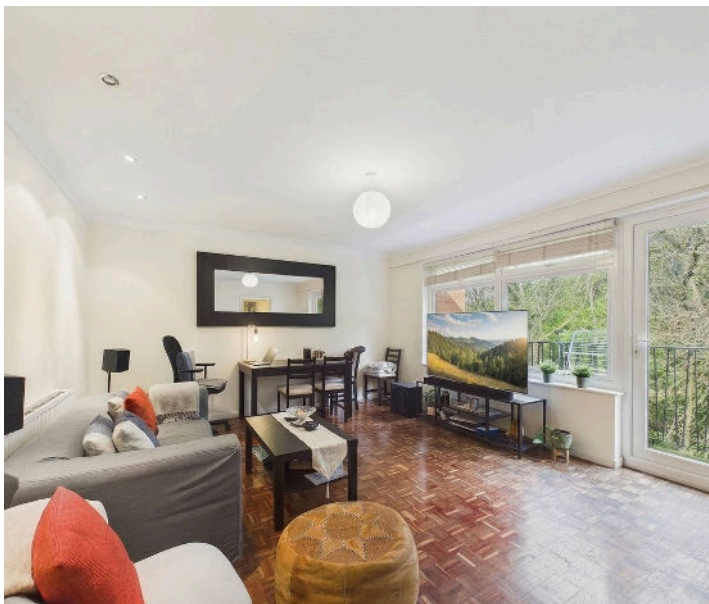
This well-presented two-bedroom flat on Dell Farm Road in Ruislip offers a comfortable and practical living space, ideal for first-time buyers, small families, or investors. The property features a bright and airy living room, providing plenty of natural light and a welcoming atmosphere for relaxing or entertaining guests.

The separate kitchen is thoughtfully laid out with ample storage and workspace, making it both functional and convenient for everyday use. Both bedrooms are generously sized. The Property benefit from a garage which can be used for addition storage.

The flat also benefits from a modern bathroom, well-maintained interiors, and a clean, neutral décor throughout, allowing buyers to easily make it their own.

Located in a quiet residential area, the property enjoys easy access to local shops, schools, and transport links, making commuting and day-to-day living straightforward. With green spaces and amenities nearby, this flat combines suburban tranquility with practical convenience.

Presented with care by Lawrence Rand – helping you find the place you'll love to call home.





Nearest Station

Ruislip Station - Approx 0.6 miles

Ruislip Manor Station- Approx 0.8 miles

Ruislip Gardens Station - Approx 1.0 mile

Verified Material Information:

Council Tax band: D

EPC Energy Efficiency Rating: D

Lease Years Remaining 938

Suppliers:

Electricity supply: Mains,

Water supply: Mains water,

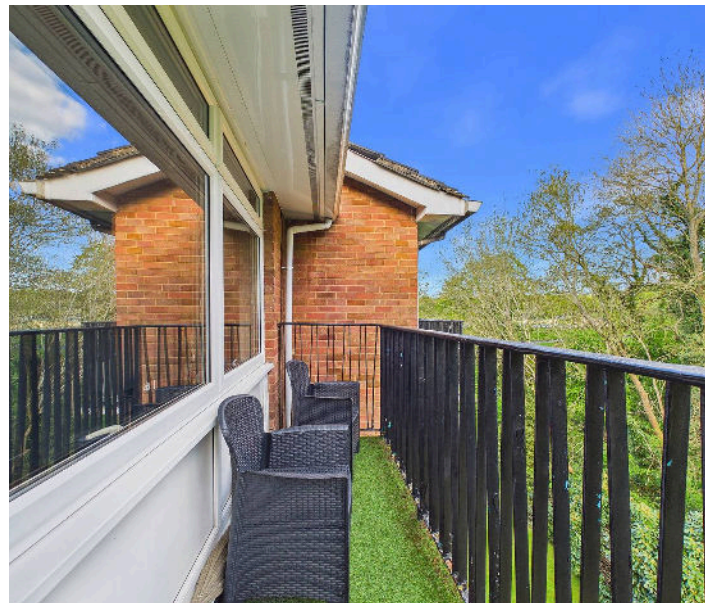
Sewerage: Mains

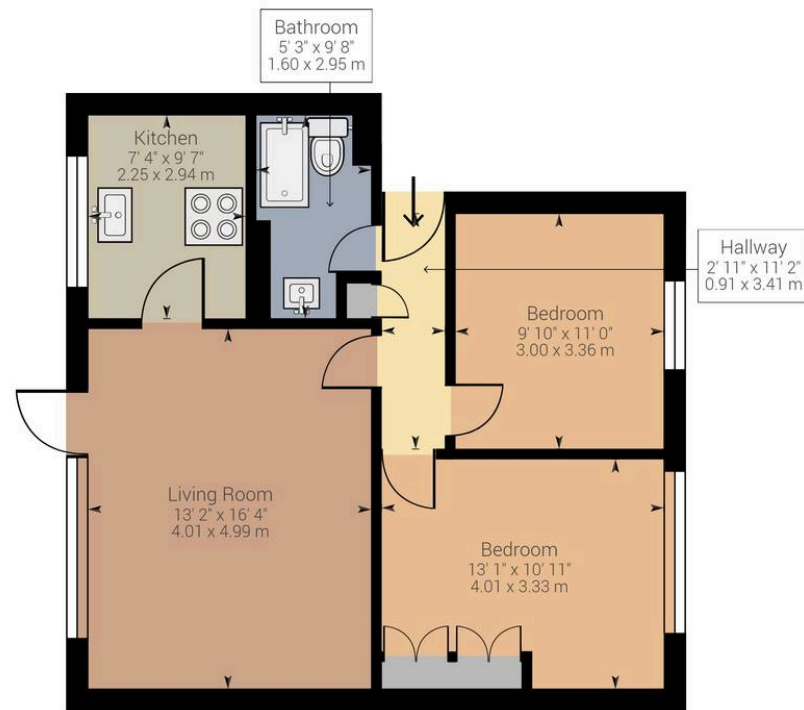
Heating: Gas central heating

Broadband: FTTP (Fibre to the Premises)

Mobile coverage: O2 - Excellent, Vodafone -

Excellent, Three - Excellent, EE - Excellent





Approximate net internal area: 634.67 ft² / 58.96 m²

While every attempt has been made to ensure accuracy, all measurements are approximate, not to scale. This floor plan is for illustrative purpose only and should be used as such by any prospective tenant or purchaser.

Powered by Giraffe360

Lawrence Rand

51 Victoria Road, Ruislip - HA4 9BH

01895 632211

sales@lawrence-rand.co.uk

www.lawrence-rand.co.uk

Lawrence Rand Limited has made every reasonable effort to ensure the accuracy of the information provided. However, we accept no responsibility for errors, omissions, or misstatements. All measurements, distances, and descriptions are approximate and for guidance only. Prospective purchasers or tenants must verify all details independently. Some images may include AI-generated virtual staging to illustrate the potential of the property and are for visual guidance only. No warranty is given or implied, and these particulars do not form part of any offer or contract. Lawrence Rand reserves the right to amend or withdraw any property without notice.