



Lea Crescent

Ruislip, Ruislip

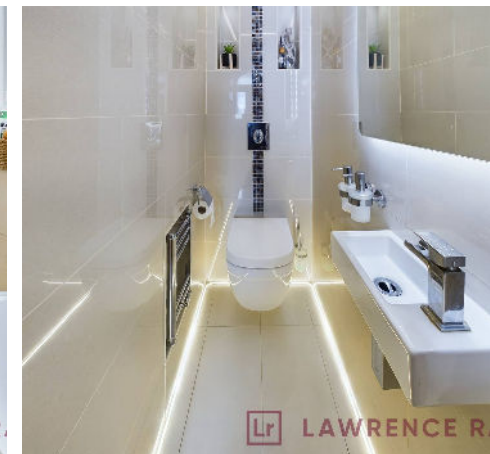
- • THREE BEDROOMS
- • GROUND FLOOR WC
- • LUXURY FITTED KITCHEN/BREAKFAST ROOM
- • WOODEN FLOORING
- • SPACIOUS RECEPTION
- • UNDERFLOOR HEATING
- • FAMILY BATHROOM
- • OFF STREET PARKING
- • CLOSE TO RUISLIP GARDENS

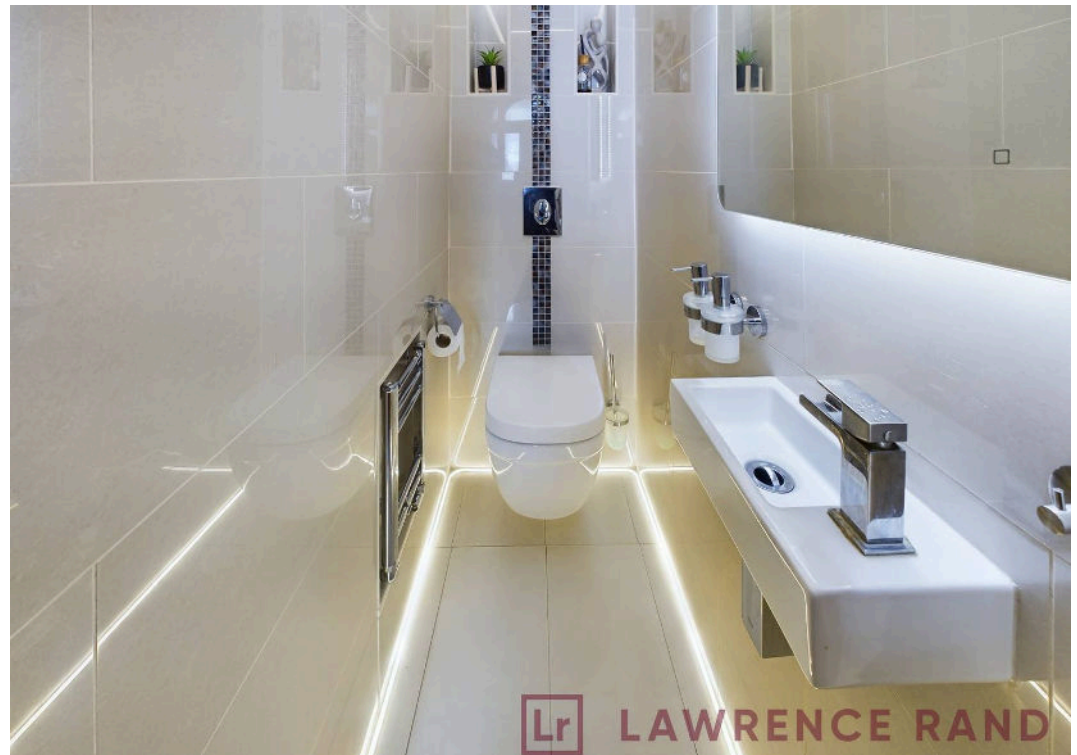
A well presented THREE BEDROOM terraced house TO RENT in a sought-after location. Perfect for a growing family.

This unfurnished property boasts a bright reception room with wooden flooring, a ground floor WC, recently installed luxury fitted kitchen/breakfast room both with underfloor heating. Leading onto a rear private garden with a storage room that can be used as an office. On the upper floor there are three light and airy bedrooms and a family bathroom.

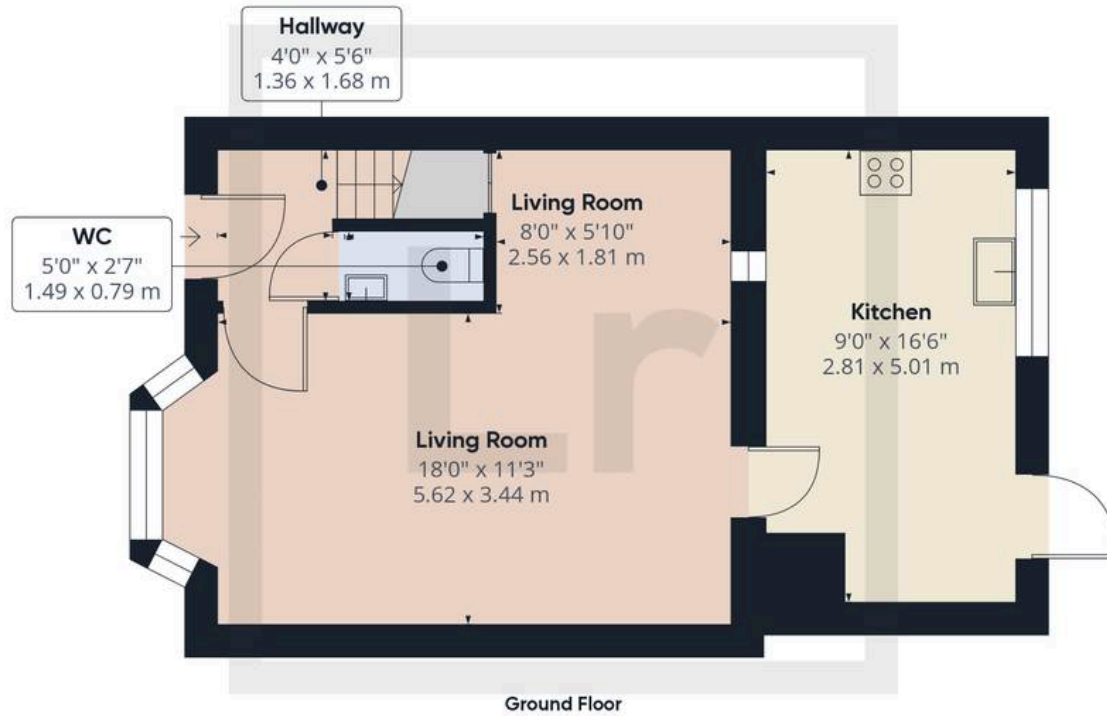
Outside there is off street parking for two cars also benefits from an electric charger.

Located in a highly sought after residential location which is perfectly positioned just moments from Ruislip Gardens' shopping and Central line station which provides a variety of services into London in less than an hour, also close by you have South Ruislip and West Ruislip stations operating the BR line. Alternatively for the motorist the A40/Western Avenue is just a short drive away providing easy and direct access into Central London with the M40/M25 servicing the Home Counties and Heathrow Airport. For families the property is ideally located within the catchment areas of the local highly regarded









Approximate total area⁽¹⁾

797.82 ft²

74.12 m²

(1) Excluding balconies and terraces

While every attempt has been made to ensure accuracy, all measurements are approximate, not to scale. This floor plan is for illustrative purposes only.

GIRAFFE 360



Lawrence Rand

51 Victoria Road, Ruislip - HA4 9BH

01895 632211 • Info@lawrence-rand.co.uk • www.lawrence-rand.co.uk/