

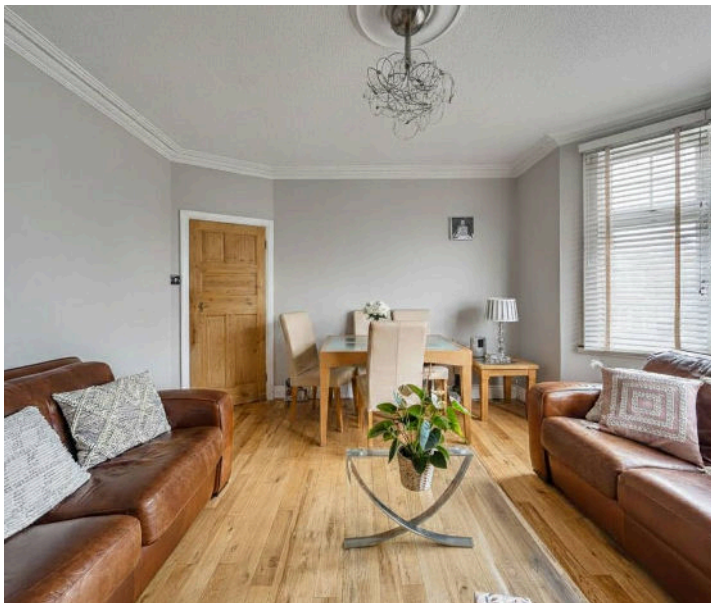


**Surrey Road, Harrow – HA1 4NH**

**In Excess of £350,000 | Leasehold**



**LAWRENCE RAND**



## Key Features & Description

- Private Rear Garden
- Potential to Extend (STPP)
- Walking Distance to 3 Underground Stations
- Modern well equipped separate kitchen with gas hob
- Catchment Area of Outstanding Schools

Lawrence Rand are delighted to present this elegant first-floor maisonette, positioned on one of Harrow's most desirable residential roads. The accommodation comprises two well-proportioned bedrooms, a sleek contemporary bathroom, and bright living space finished to a high standard throughout. The property boasts a private rear garden, providing a rare and valuable outdoor retreat ideal for both relaxation and entertaining.

The property further benefits from scope to extend (subject to planning permission). Perfectly positioned within a prime location, the home is within easy walking distance of North Harrow Station, the High Street's array of boutique shops, cafés, and amenities, and benefits from excellent transport connections into Central London. The property is also within close proximity to outstanding and well-regarded schools, including Vaughan Primary School and Harrow High School.

**Presented with care by Lawrence Rand - helping you find the place you'll love to call home.**



### **Nearest Stations:**

North Harrow – 0.3 mi – Metropolitan Line

West Harrow – 0.35 mi – Metropolitan Line

Harrow-on-the-Hill – 0.9 mi – Metropolitan Line

### **Additional Information:**

Council Tax band: D

Tenure: Lease 840 Years remaining

Ground rent: £15 pa

Energy Performance Rating: D

### **Suppliers:**

Electricity supply: Mains

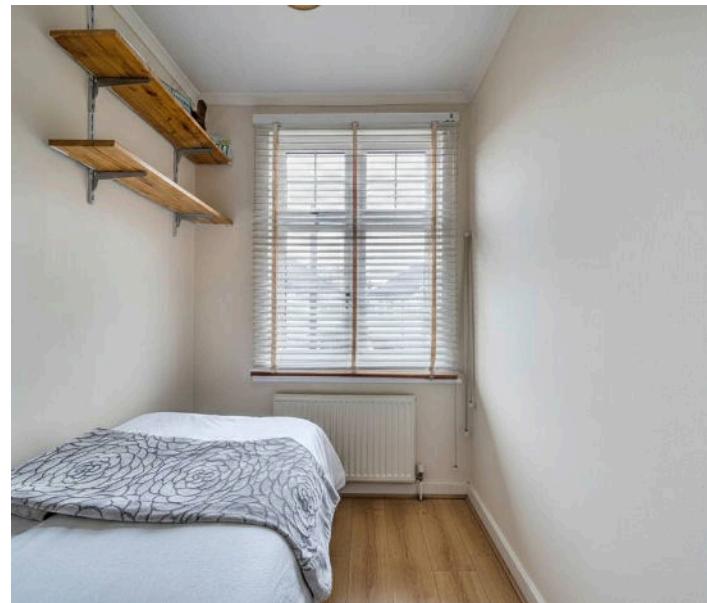
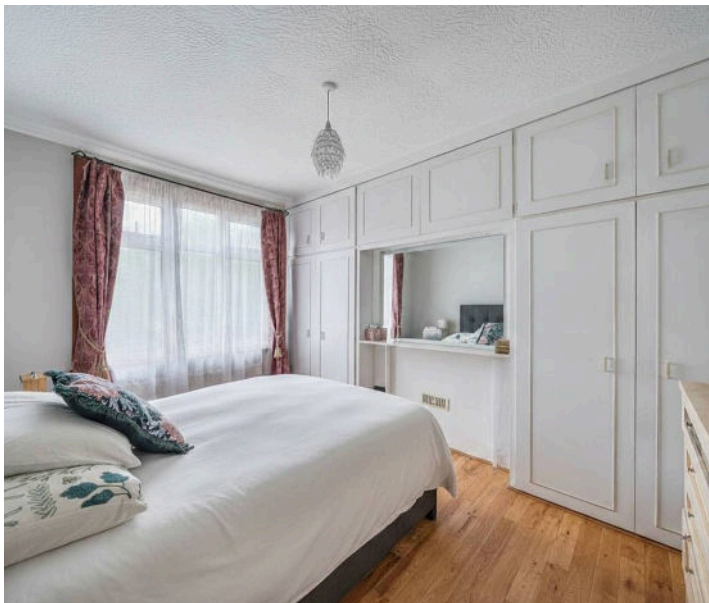
Water supply: Mains water

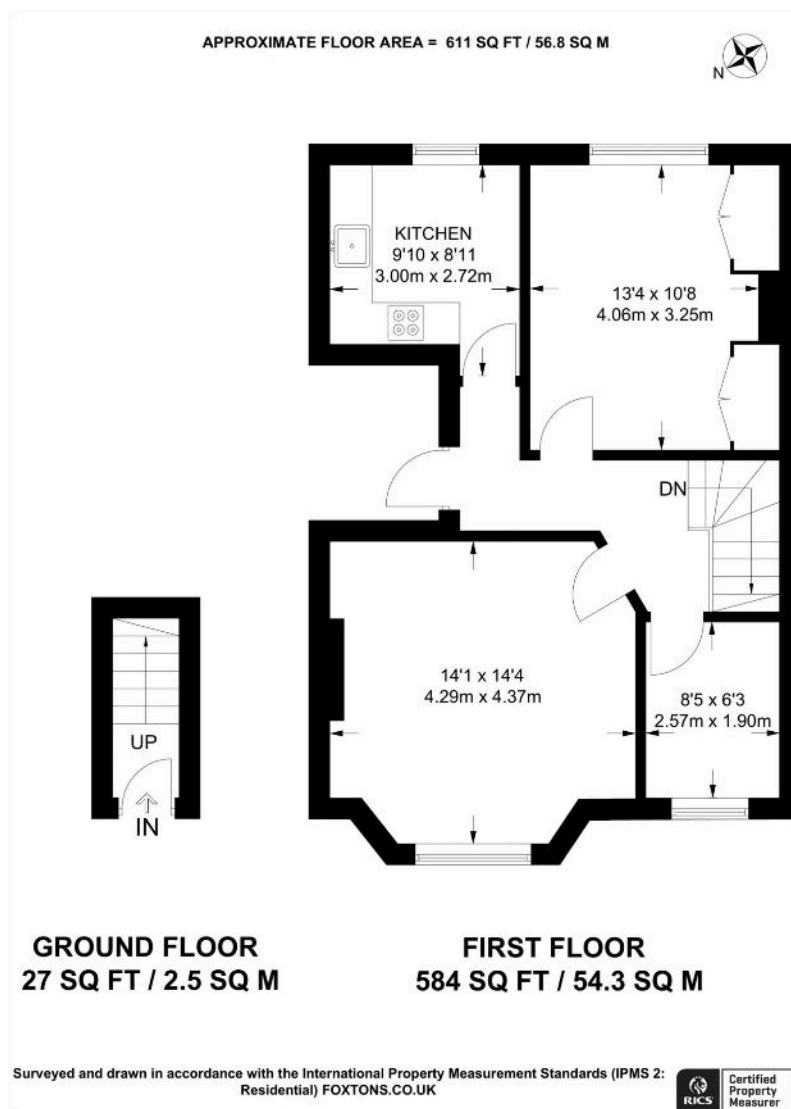
Sewerage: Mains

Heating: Gas Central

### **Broadband & mobile coverage:**

Broadband: FTTP (Fibre to the Premises) Mobile coverage: O2 – Excellent, Vodafone – Excellent, Three – Excellent, EE Excellent





## Lawrence Rand

51 Victoria Road, Ruislip - HA4 9BH

01895 632211

[sales@lawrence-rand.co.uk](mailto:sales@lawrence-rand.co.uk)

[www.lawrence-rand.co.uk/](http://www.lawrence-rand.co.uk/)

Lawrence Rand Limited has made every reasonable effort to ensure the accuracy of the information provided. However, we accept no responsibility for errors, omissions, or misstatements. All measurements, distances, and descriptions are approximate and for guidance only. Prospective purchasers or tenants must verify all details independently. Some images may include AI-generated virtual staging to illustrate the potential of the property and are for visual guidance only. No warranty is given or implied, and these particulars do not form part of any offer or contract. Lawrence Rand reserves the right to amend or withdraw any property without notice.