



Winkley Court, Eastcote Lane - HA2 8RT

Guide Price **£465,000** | Freehold



LAWRENCE RAND



Key Features & Description

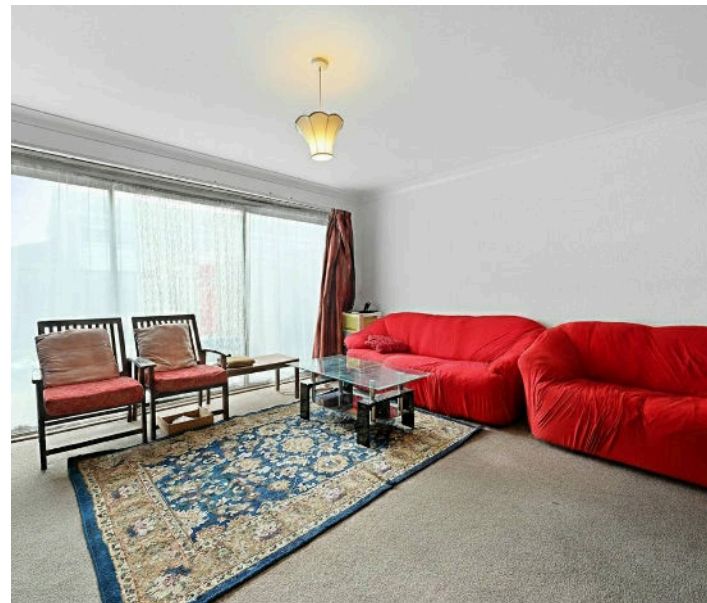
- Two bedroom End-Terraced house
- Garage to rear
- Newly Fitted Kitchen
- Brand New Boiler
- Own Driveway
- Large Open line Living room/Dining room

A fantastic opportunity to acquire a two-bedroom semi-detached house in a popular location. The home has been well maintained and benefits from a modern kitchen, updated bathroom, and a recently fitted boiler, offering move-in-ready convenience.

The property also features a bright living room, two well-proportioned bedrooms, a private driveway, a rear garden, and a garage to the rear, providing excellent parking and storage options.

With scope to personalise further and located close to local amenities, transport links, and green spaces, this property offers both comfort and potential in a sought-after area.

Presented with care by Lawrence Rand—helping you find the place you'll love to call home.





Nearest Stations & Location

South Harrow Tube Station – 0.6 miles (Piccadilly line)

Rayners Lane Tube Station – 0.9 miles (Piccadilly & Metropolitan lines)

Northolt Tube Station – 1.0 mile (Central line)

Additional Information

Council Tax band: D, London Borough of Harrow

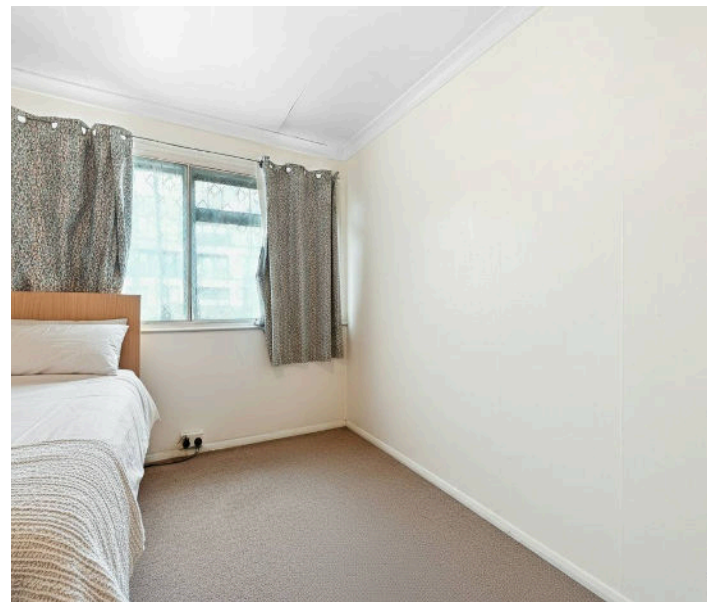
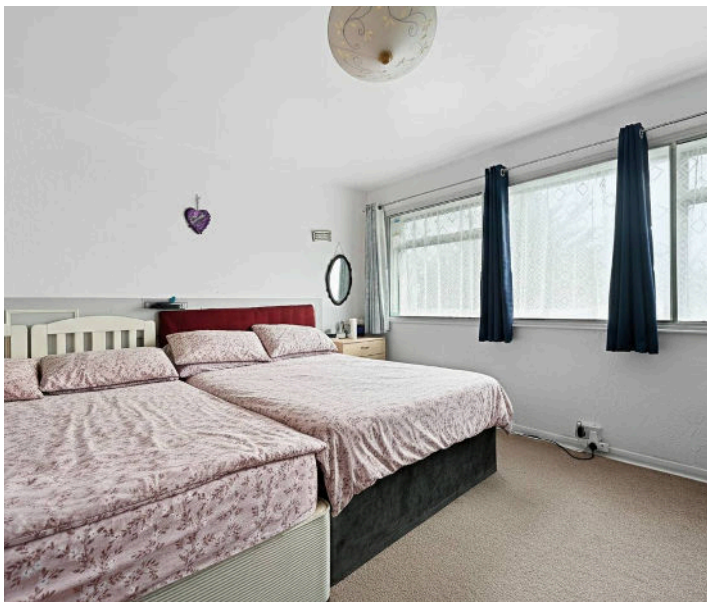
Energy Performance Rating (EPC): TBC

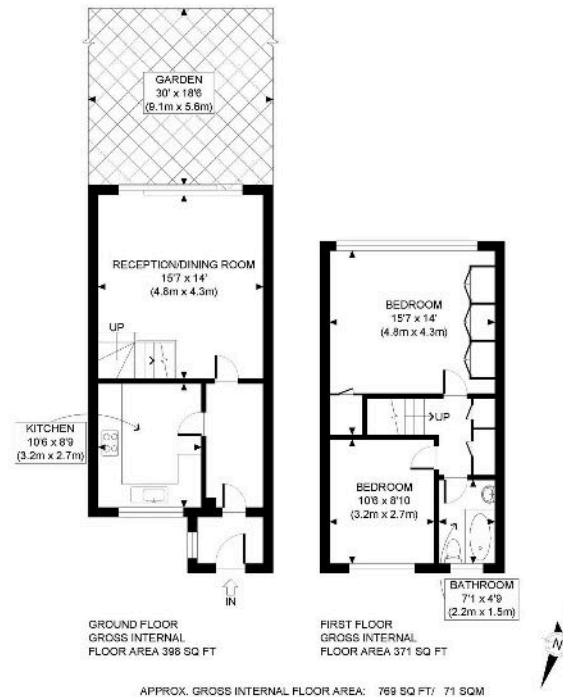
Suppliers:

Electricity supply: Mains, Water supply: Mains water, Sewerage: Mains Heating: Gas central heating

Broadband & mobile coverage:

Broadband: FTTP (Fibre to the Premises) Mobile coverage: O2 - Excellent, Vodafone - Excellent, Three - Excellent, EE - Excellent





This plan is for illustrative purposes only and should be used as such by any prospective client. Whilst every attempt has been made to ensure the accuracy of the Floor Plan contained here, measurements of the doors, windows, rooms and any other items are approximate and no responsibility is taken for any errors, omissions, or misstatement. The services, systems and appliances shown have not been tested and no guarantee as to the operability or efficiency can be given.

PROPERTY PHOTO PLANS

Lawrence Rand
 51 Victoria Road, Ruislip - HA4 9BH
 01895 632211

sales@lawrence-rand.co.uk
www.lawrence-rand.co.uk/

Lawrence Rand Limited has made every reasonable effort to ensure the accuracy of the information provided. However, we accept no responsibility for errors, omissions, or misstatements. All measurements, distances, and descriptions are approximate and for guidance only. Prospective purchasers or tenants must verify all details independently. Some images may include AI-generated virtual staging to illustrate the potential of the property and are for visual guidance only. No warranty is given or implied, and these particulars do not form part of any offer or contract. Lawrence Rand reserves the right to amend or withdraw any property without notice.