



Emporium Court, 219 Alexandra Avenue - HA2 9DL

Guide Price £295,000 | Leasehold



LAWRENCE RAND



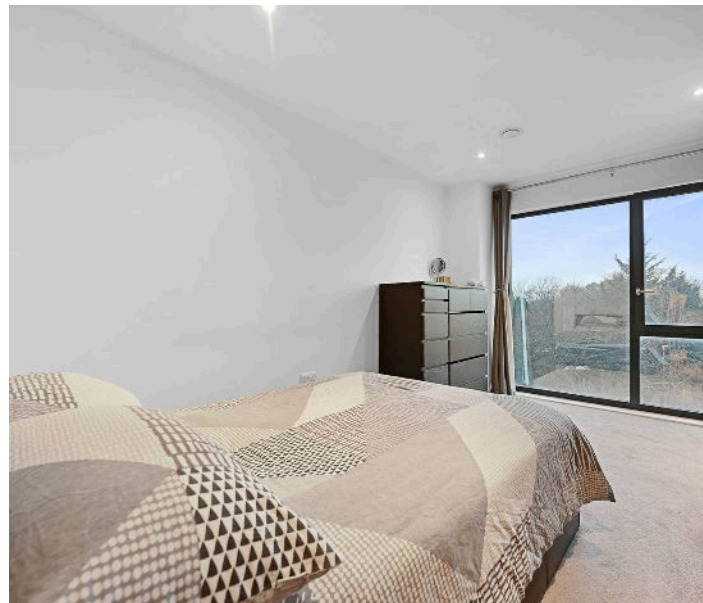
Key Features & Description

- One bedroom luxury upper floor apartment
- Open plan kitchen/lounge/diner
- Allocated parking
- Balcony
- Modern fitted bathroom
- Chain free

This beautifully presented one-bedroom upper floor apartment, designed to make everyday living both comfortable and stylish. Filled with natural light, the contemporary open-plan layout creates a welcoming space to relax, unwind, or entertain. Step out onto your private balcony from the living area and enjoy a quiet moment outdoors, all while being perfectly positioned on Alexandra Avenue, close to green spaces, local amenities, and excellent transport connections.

The generously sized double bedroom offers a calm and comfortable retreat, complemented by a stylish, modern bathroom. Underfloor heating throughout the apartment ensures year-round comfort and a touch of everyday luxury.

Presented with care by Lawrence Rand – helping you find the place you'll love to call home.





Nearest Stations

South Harrow (Piccadilly Line) – 0.6 miles
 Rayners Lane (Metropolitan & Piccadilly Lines) – 0.8 miles
 Northolt Park (National Rail – Chiltern Railways) – 0.6 miles
 West Harrow (Metropolitan Line) – 1.2 miles
 North Harrow (Metropolitan Line) – 1.4 miles

Overlooking Alexandra Avenue the property is situated near a variety of green spaces, including Newton Farm Ecology Park, Alexandra Park, and Newton Park. Close proximity to a number Ofsted rated GOOD and OUTSTANDING schools.

Additional Information

Council Tax band: C
 Tenure: Leasehold, 119 years remaining, Service Charge £2,400pa, £300pa Ground Rent
 EPC Energy Efficiency Rating: B

Suppliers

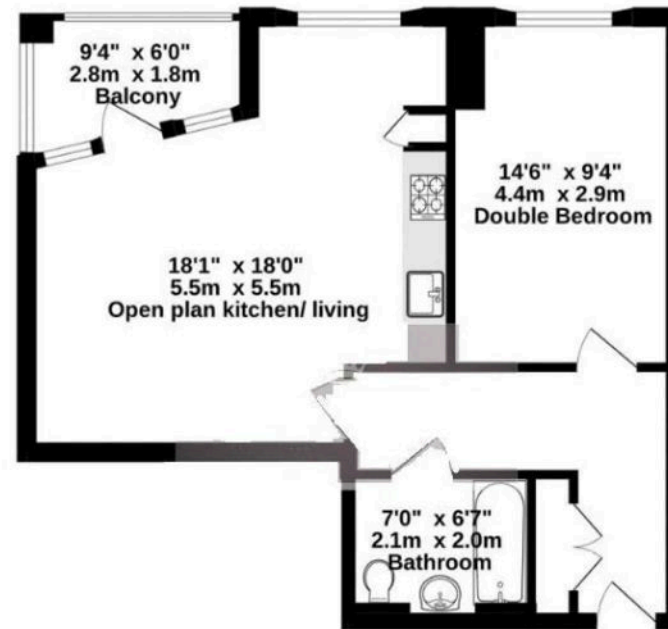
Electricity supply: Mains, Water supply: Mains
 water Sewerage: Mains Heating: Electric underfloor

Broadband & mobile coverage

Broadband: FTTP (Fibre to the Premises) Mobile coverage: O2 – Excellent, Vodafone – Excellent, Three – Excellent, EE Excellent



SECOND FLOOR
564 sq.ft. (52.4 sq.m.) approx.



TOTAL FLOOR AREA: 564 sq.ft. (52.4 sq.m.) approx.
While every attempt has been made to ensure the accuracy of the floorplan, measurements, dimensions, and area are approximate and no responsibility is taken for any errors, omissions or misstatements. This plan is for illustrative purposes only and should be used as such by any prospective purchaser. The services, systems and appliances shown have not been tested and no guarantee as to their operability or efficiency can be given.
Issue with drawings 12/2025

Lawrence Rand
51 Victoria Road, Ruislip - HA4 9BH
01895 632211

sales@lawrence-rand.co.uk
www.lawrence-rand.co.uk/

Lawrence Rand Limited has made every reasonable effort to ensure the accuracy of the information provided. However, we accept no responsibility for errors, omissions, or misstatements. All measurements, distances, and descriptions are approximate and for guidance only. Prospective purchasers or tenants must verify all details independently. Some images may include AI-generated virtual staging to illustrate the potential of the property and are for visual guidance only. No warranty is given or implied, and these particulars do not form part of any offer or contract. Lawrence Rand reserves the right to amend or withdraw any property without notice.