



Victoria Road, Ruislip, HA4 0EY
Guide Price £325,000 | Leasehold

Lr LAWRENCE RAND



Key Features & Description

- Garden flat
- Excellent condition
- Open plan living
- Close to South Ruislip amenities
- No chain
- New lease upon completion

An oasis of tranquility' A stunning one bedroom ground floor garden flat situated in close proximity to South Ruislip's amenities. The property has been thoroughly modernised and has an open-plan lifestyle living with the reception leading into a delightful private West facing-garden which has direct private access to the side of the property. New lease upon completion.

Externally there is a communal entrance with entry-phone system. The apartment has a spacious entrance hallway with storage and doors leading into the kitchen which opens into the bright and spacious living room. There is a large double bedroom and modern bathroom. Externally, there is an additional storage cupboard.

Presented with care by Lawrence Rand - helping you find the place you'll love to call home.





Nearest Stations

South Ruislip (Central Line & National Rail) – 0.3 miles

Ruislip Gardens (Piccadilly Line) – 0.6 miles

Ruislip Manor (Metropolitan & Piccadilly Lines) – 1.2 miles

The property is located on Victoria Road and it backs onto the Arla development of apartments very close to South Ruislip's amenities including Central and mainline station.

Additional Information

Council Tax band: C

Tenure: Leasehold, 83 years remaining, Ground Rent £10pa Service Charge £69pm

EPC Energy Efficiency Rating: E

Suppliers

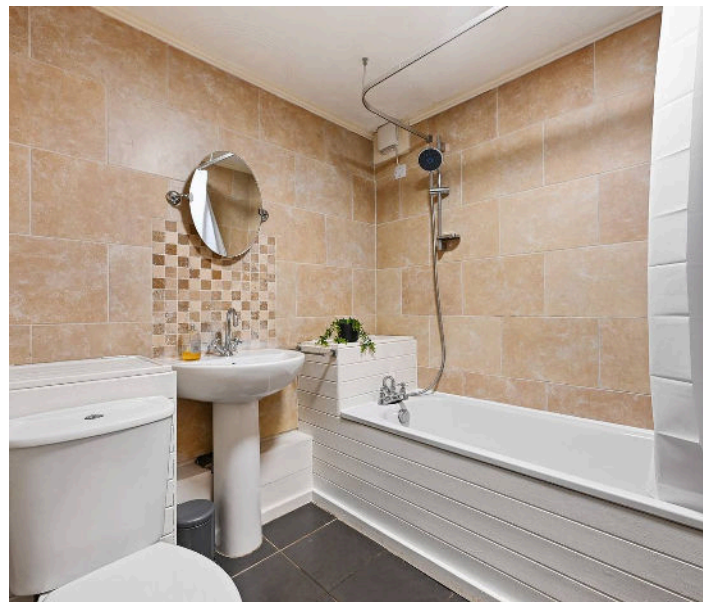
Electricity supply: Mains, Water supply:

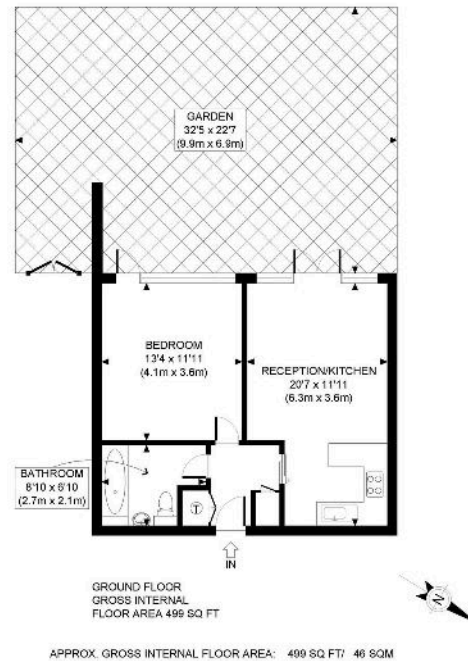
Mains water Sewerage:

Mains Heating: Gas Central

Broadband & mobile coverage

Broadband: FTTP (Fibre to the Premises) Mobile coverage: O2 - Excellent, Vodafone - Excellent, Three - Excellent, EE Excellent





This plan is for illustrative purposes only and should be used as such by any prospective client. Whilst every attempt has been made to ensure the accuracy of the Floor Plan contained here, measurements of the doors, windows, rooms and any other items are approximate and no responsibility is taken for any errors, omissions, or misstatement. The services, systems and appliances shown have not been tested and no guarantee as to the operability or efficiency can be given.

PROPERTY PHOTO PLANS

Lawrence Rand
51 Victoria Road, Ruislip – HA4 9BH
01895 632211

Sales@lawrence-rand.co.uk
www.lawrence-rand.co.uk

Lawrence Rand Limited has made every reasonable effort to ensure the accuracy of the information provided. However, we accept no responsibility for errors, omissions, or misstatements. All measurements, distances, and descriptions are approximate and for guidance only. Prospective purchasers or tenants must verify all details independently. Some images may include AI-generated virtual staging to illustrate the potential of the property and are for visual guidance only. No warranty is given or implied, and these particulars do not form part of any offer or contract. Lawrence Rand reserves the right to amend or withdraw any property without notice.