



LAWRENCE RAND

Jefferson Lodge, 85 Sudbury Avenue

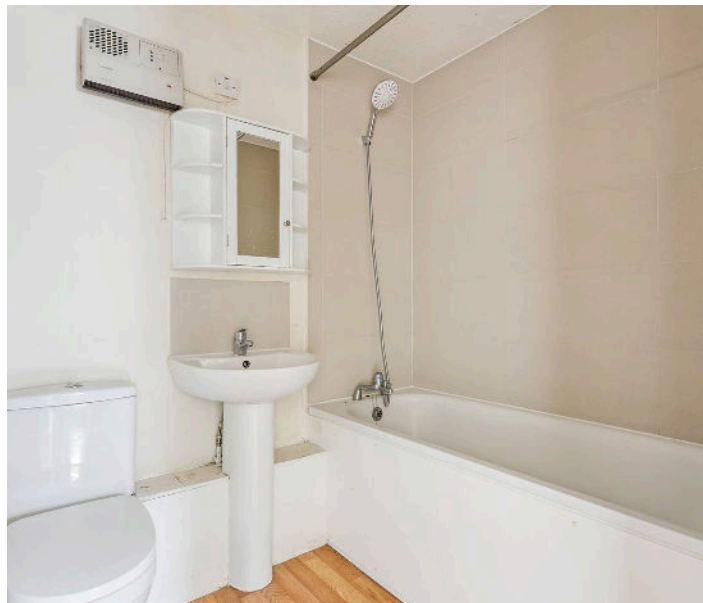
In Excess of £200,000

KEY FEATURES:

- Bright first floor apartment in a well maintained development
- Spacious reception room with large window and wood style flooring
- Separate kitchen fitted with shaker style units and integrated oven
- Allocated residents parking and communal gardens
- Excellent potential for first-time buyers and investors
- Well-balanced layout measuring approximately 424 sq ft
- Peaceful double bedroom with pleasant green outlooks
- Bathroom with white suite including bath and overhead shower
- Convenient access to local shops, transport links, and open spaces

Set within a quiet residential development, this bright first floor apartment at Jefferson Lodge offers excellent potential for first time buyers and investors alike. Measuring approximately 424 sq ft, the property provides well balanced rooms and plenty of natural light throughout.

The entrance hallway leads through to a generous reception room, featuring a large window that frames views across the communal gardens and wood style flooring that runs throughout. A separate kitchen sits conveniently off the hallway, fitted with white shaker style cabinetry, tiled splashbacks, and space for appliances.



The double bedroom enjoys a peaceful rear aspect with pleasant green outlooks, while the bathroom is fitted with a white suite comprising a bath with overhead shower, basin, and WC.

Externally, residents benefit from allocated parking and neatly kept communal gardens, enhancing the sense of space and convenience. Jefferson Lodge is ideally positioned for easy access to local shops, transport links, and open green spaces.

Verified information

Tenure: Leasehold

Lease Length: 95 years remaining

Service Charge: £3,000 per annum

Council Tax Band: C

EPC Rating: D

Heating: Electric

Broadband: Standard connection available

Parking: Allocated residents' space

Disclaimer

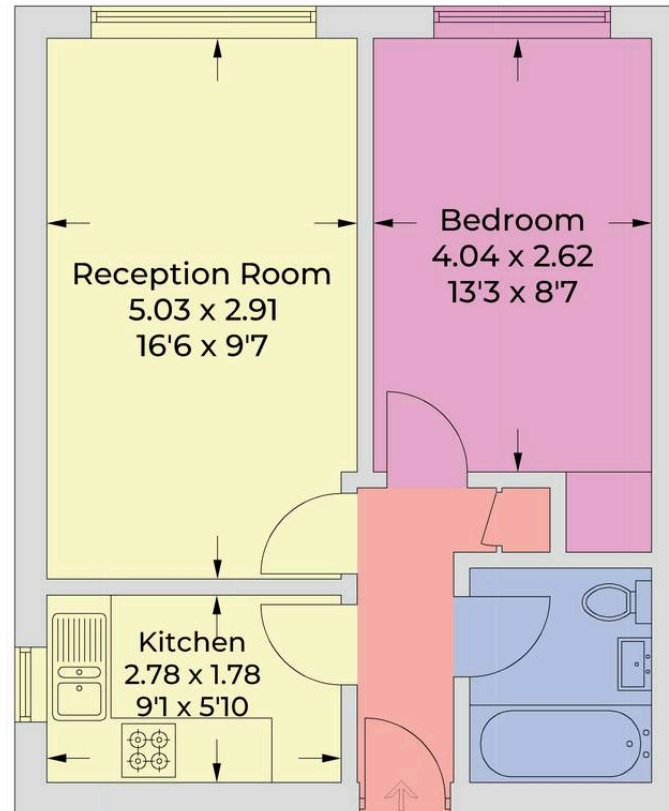
Lawrence Rand Limited has made every effort to ensure the accuracy of the information contained in these property details. However, we do not accept responsibility for any errors, omissions, or misstatements. All measurements, distances, and descriptions are approximate and intended for guidance only. Prospective purchasers should verify all information themselves by inspection or otherwise.





Jefferson Lodge

Approximate Gross Internal Area = 39.4 sq m / 424 sq ft



First Floor

IN

Illustration for identification purposes only,
measurements are approximate, not to scale.
© CJ Property Marketing Produced for Lawrence Rand

Lawrence Rand

51 Victoria Road, Ruislip - HA4 9BH

01895 632211 • Info@lawrence-rand.co.uk • www.lawrence-rand.co.uk/