



Bourne Court, South Ruislip, HA4 6ET

In Excess of **£450,000 | Leasehold**



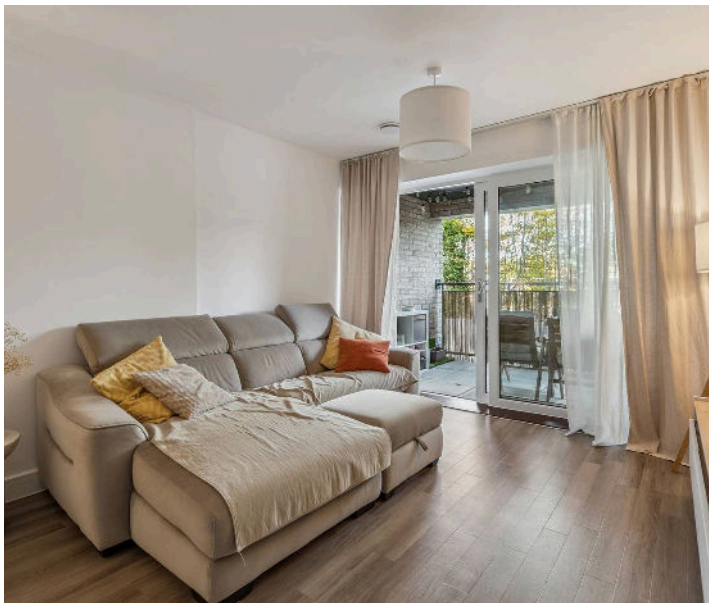
LAWRENCE RAND



Key Features & Description

- Modern two-bedroom, two-bathroom apartment
- Built circa 2021 with remaining NHBC warranty
- Spacious open-plan living and dining room
- Private balcony with leafy outlook
- Separate contemporary kitchen with integrated appliances
- Principal bedroom with fitted storage and shower room
- Second double bedroom and stylish family bathroom
- Allocated parking within secure gated development
- Communal gardens and residents' play park

This stylish first-floor apartment offers modern living with a bright, well-designed layout, private balcony and allocated parking. The spacious open-plan living and dining area opens onto a covered balcony, ideal for relaxing or entertaining. A separate contemporary kitchen is fully equipped with integrated appliances, including twin ovens and a dishwasher. There are two generous double bedrooms, with the main bedroom featuring fitted wardrobes and a sleek en-suite, complemented by a modern family bathroom. Additional highlights include gas central heating, a utility cupboard and the peace of mind of an NHBC warranty. Residents benefit from gated parking, secure communal access and a private play park. Perfectly positioned just a short walk from South Ruislip station, shops, restaurants and leisure facilities, this home is ideal for professionals, couples or young families seeking convenience and comfort in a well-connected location.



Presented with care by Lawrence Rand – helping you find the place you'll love to call home.



Nearest Stations

South Ruislip 0.09 miles

Ruislip Gardens (Tube – Piccadilly Line) 0.5 miles

Ruislip Manor (Tube – Metropolitan/Piccadilly) 1.3 miles

Additional Information

Council Tax band: D

Tenure: Leasehold, 125 years remaining

Service Charge £1277pa

EPC Energy Efficiency Rating: B

Suppliers

Electricity supply: Mains,

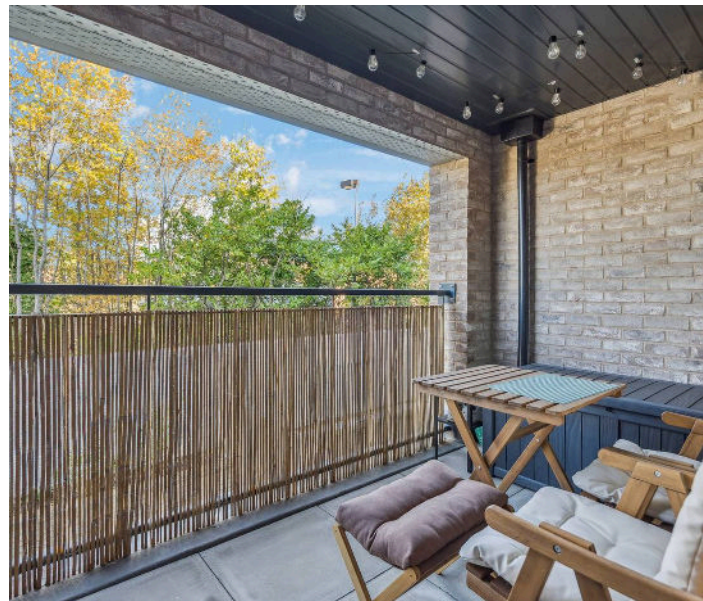
Water supply: Mains water

Sewerage: Mains

Heating: Gas Central

Broadband & mobile coverage:

Broadband: FTTP (Fibre to the Premises) Mobile coverage: O2 – Excellent, Vodafone – Excellent, Three – Excellent, EE Excellent





Bourne Court, South Ruislip, HA4

Approximate Gross Internal Area
65.6 sq m / 706 sq ft

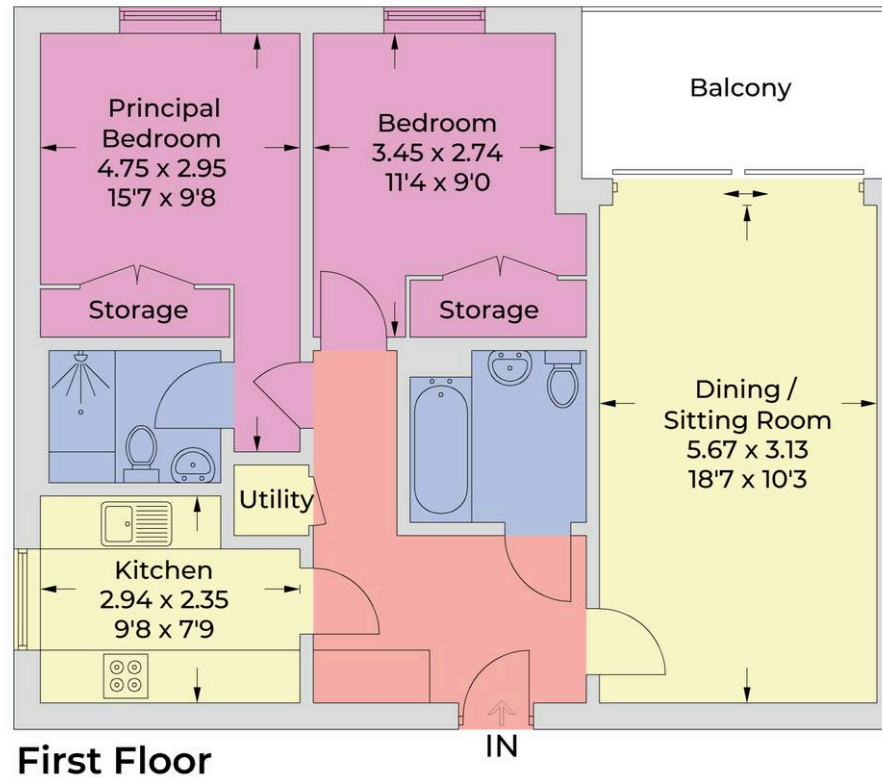


Illustration for identification purposes only,
measurements are approximate, not to scale.
© CJ Property Marketing Produced for Lawrence Rand

Lawrence Rand

51 Victoria Road, Ruislip - HA4 9BH

01895 632211

Sales@lawrence-rand.co.uk

www.lawrence-rand.co.uk

Lawrence Rand Limited has made every reasonable effort to ensure the accuracy of the information provided. However, we accept no responsibility for errors, omissions, or misstatements. All measurements, distances, and descriptions are approximate and for guidance only. Prospective purchasers or tenants must verify all details independently. Some images may include AI-generated virtual staging to illustrate the potential of the property and are for visual guidance only. No warranty is given or implied, and these particulars do not form part of any offer or contract. Lawrence Rand reserves the right to amend or withdraw any property without notice.