



Emerald Court

Ruislip

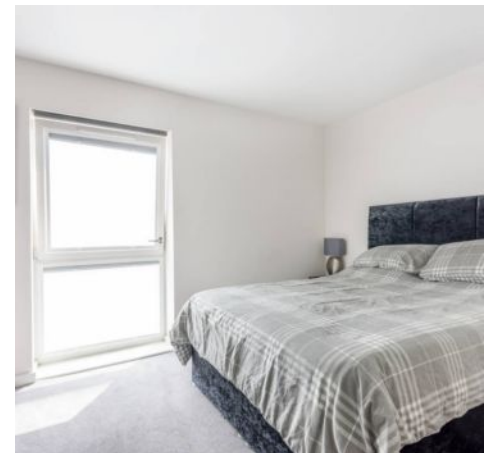
- Purpose-built top-floor apartment in modern development
- Open-plan living/dining area with excellent natural light
- Private balcony ideal for morning coffee or evening drinks
- Contemporary fitted kitchen with integrated appliances
- Spacious double bedroom with fitted wardrobes
- Modern bathroom with quality fixtures and tiling
- Secure entry phone system
- Walking distance to shops, cafés and transport links

Contemporary living, superbly located, this top floor apartment offers stylish interiors, a private balcony.

Positioned within a sought, after modern development, this purpose-built top floor apartment is beautifully finished throughout and provides a superb opportunity for first time buyers, professionals, commuters, or investors.

The well proportioned layout features a light filled open plan living and dining area with ample space to entertain or relax, complemented by direct access to a private balcony, perfect for morning coffee or unwinding in the evening. The sleek, integrated kitchen offers clean lines and excellent storage, designed to maximise both function and style.

The bedroom is generously sized, with fitted wardrobes and large windows drawing in natural light. A contemporary bathroom with modern tiling and quality fixtures completes the interior. Additional features include a secure entry phone system,







You can include any text here. The text can be modified upon generating your brochure.

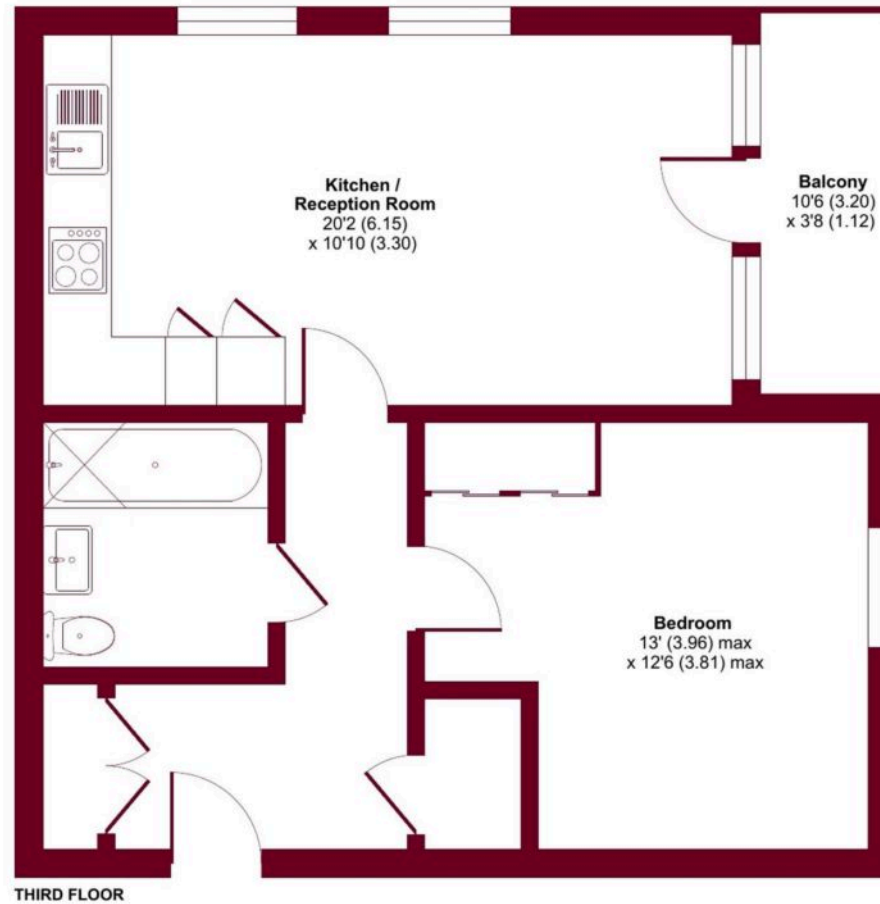




Emerald Court, Arla Place, Ruislip, HA4

Approximate Area = 531 sq ft / 49 sq m

For identification only - Not to scale





Lawrence Rand

51 Victoria Road, Ruislip - HA4 9BH

01895 632211 • Info@lawrence-rand.co.uk • www.lawrence-rand.co.uk/