



Malvern Avenue, Harrow - HA2 9EU

Guide Price £600,000 | Freehold



LAWRENCE RAND



Key Features and Description

- Four Bedrooms
- Two receptions
- Two bathrooms
- Off street parking
- Good condition throughout
- Extended loft conversion
- Close to local amenities
- Large rear garden
- Garage

An extended and beautifully presented four-bedroom mid-terrace family home arranged over three floors, offering spacious and modern living throughout.

The ground floor features a bright front dining room, a generous rear reception overlooking the 90ft+ garden, and a sleek fitted kitchen with modern units. The first floor offers two double bedrooms, a single bedroom and a family bathroom, while the loft conversion provides a spacious dormer bedroom with en-suite. Newly fitted carpets throughout.

Outside boasts a large private garden with decking and patio, off-street parking via a private driveway with drop kerb, and a garage accessed from the rear service road.

Presented with care by Lawrence Rand - helping you find the place you'll love to call home.





Nearest Stations

Rayners Lane Station – Approx 0.6 miles

South Harrow Station – Approx 0.8 miles

West Harrow Station – Approx 1.2 miles

Verified Material Information:

Local authority: Hillingdon

Council tax band: F

Suppliers:

Electricity supply: Mains, Water supply: Mains
water, Sewerage: Mains

Heating: Gas central heating

Broadband & mobile coverage:

Broadband: FTTP (Fibre to the Premises) Mobile
coverage: O2 – Excellent, Vodafone – Excellent,
Three – Excellent, EE – Excellent





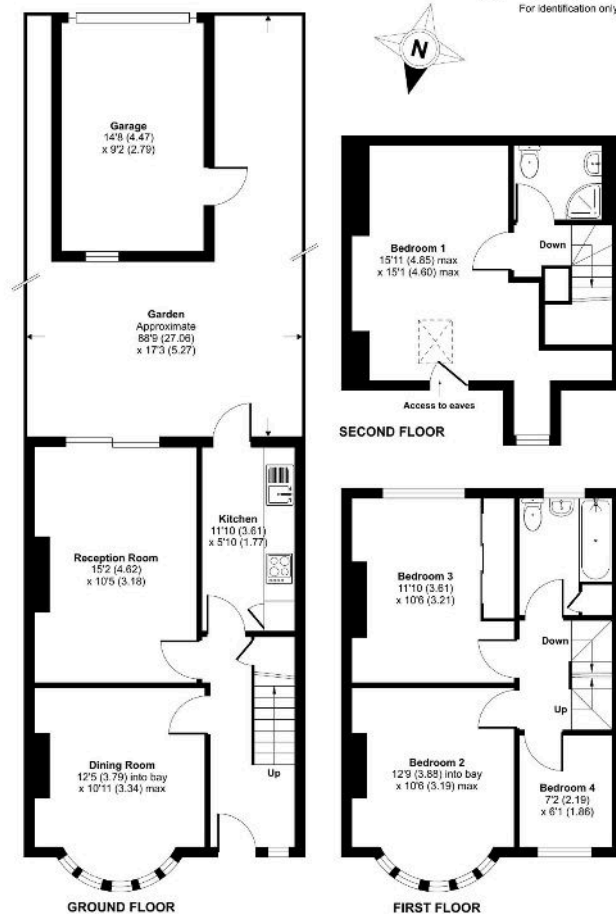
Malvern Avenue, Harrow, HA2

Approximate Area = 1077 sq ft / 100 sq m

Garage = 134 sq ft / 12.4 sq m

Total = 1211 sq ft / 112.4 sq m

For identification only - Not to scale



Floor plan produced in accordance with RICS Property Measurement 2nd Edition, Incorporating International Property Measurement Standards (IPMS2 Residential). ©rickheom 2025. Produced for Lawrence Rand. REF: 1331866.

Lawrence Rand
51 Victoria Road, Ruislip - HA4 9BH

01895 632211

sales@lawrence-rand.co.uk
www.lawrence-rand.co.uk

Lawrence Rand Limited has made every reasonable effort to ensure the accuracy of the information provided. However, we accept no responsibility for errors, omissions, or misstatements. All measurements, distances, and descriptions are approximate and for guidance only. Prospective purchasers or tenants must verify all details independently. Some images may include AI-generated virtual staging to illustrate the potential of the property and are for visual guidance only. No warranty is given or implied, and these particulars do not form part of any offer or contract. Lawrence Rand reserves the right to amend or withdraw any property without notice.