



LAWRENCE RAND

48 Crosier Way, Ruislip

Guide Price **£725,000**

48 Crosier Way

Ruislip, Ruislip

- Four bedrooms
- Two bathrooms
- Extended
- Quiet road

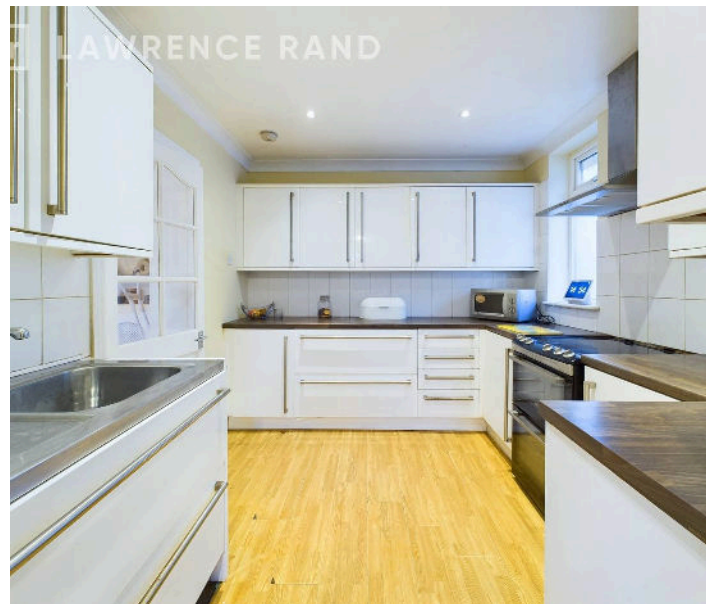
A four bedroom, two bathroom semi-detached bungalow situated on this quiet residential road. The property offers bright and spacious living accommodation over two floors.

Accommodation comprises of; entrance hallway, front reception with feature fire-place rear reception overlooking garden, dining area, kitchen, shower-room, study and bedroom with stairs leading to first floor with landing area and doors to two bedrooms and bathroom.

To the front is off street parking for two cars and shared driveway to garage.

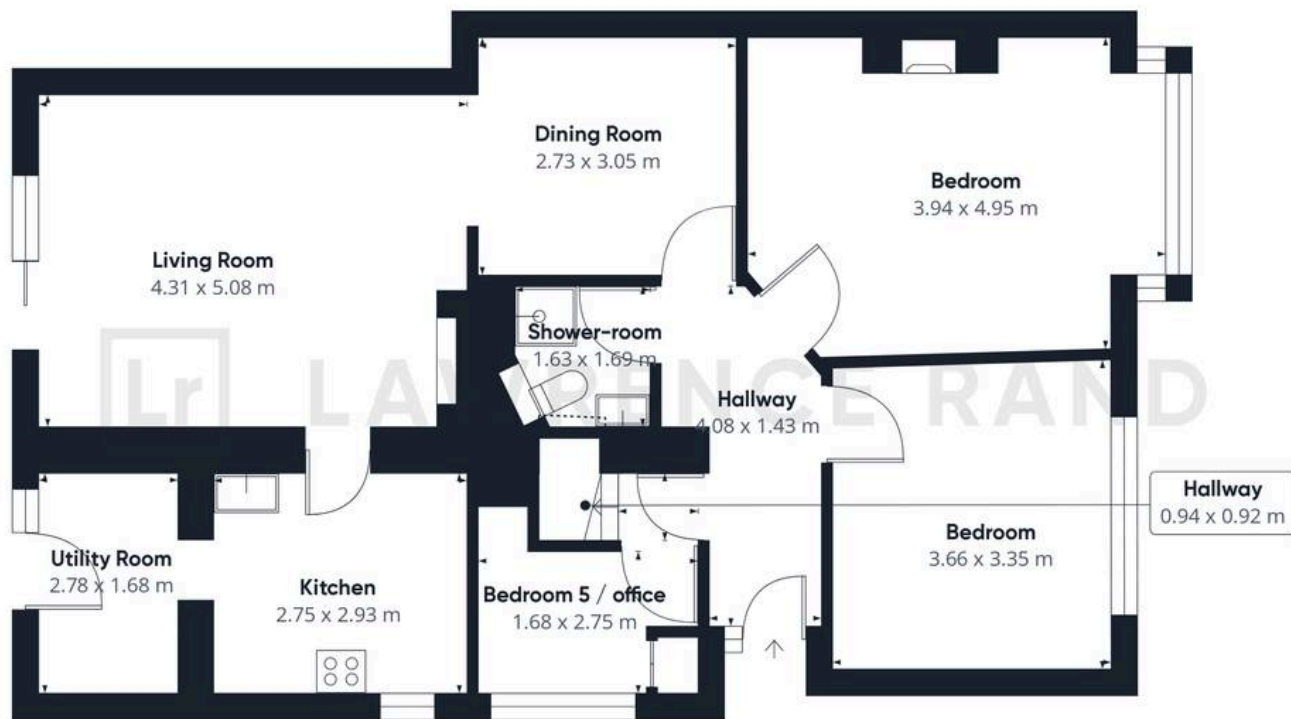
To the rear is a large garden mainly laid to lawn.

Perfectly positioned just moments from Ruislip High Street with its trendy eateries, restaurants and transport connections (Piccadilly/Metropolitan lines and Ruislip Gardens (Central Line/Br Connection). Alternatively for the motorist the A40/Western Avenue is just a short drive away providing easy and direct access into Central London and the Home Counties. Within the catchment area of several highly regarded schools including Sacred Heart.

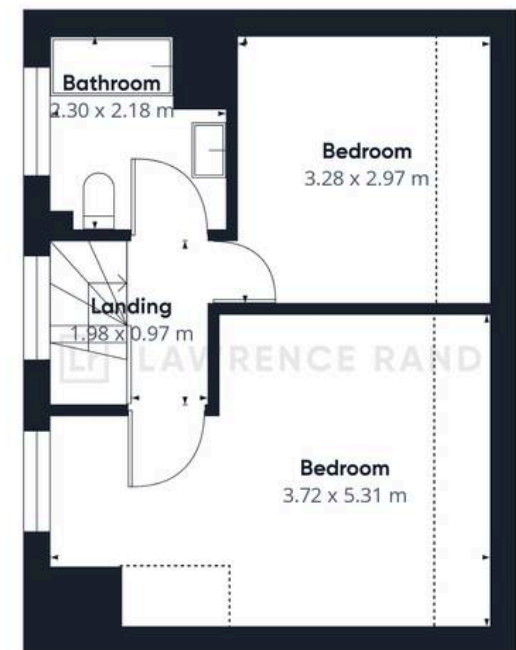


AWRENCE RAND





Ground Floor Building 1



Floor 1 Building 1



Ground Floor Building 2



Ground Floor Building 3



Lawrence Rand

51 Victoria Road, Ruislip - HA4 9BH

01895 632211 • Info@lawrence-rand.co.uk • www.lawrence-rand.co.uk/