



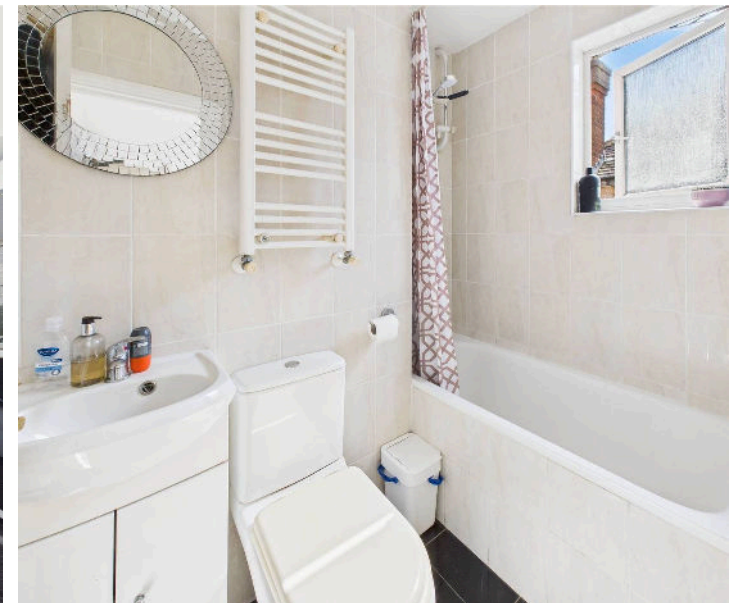
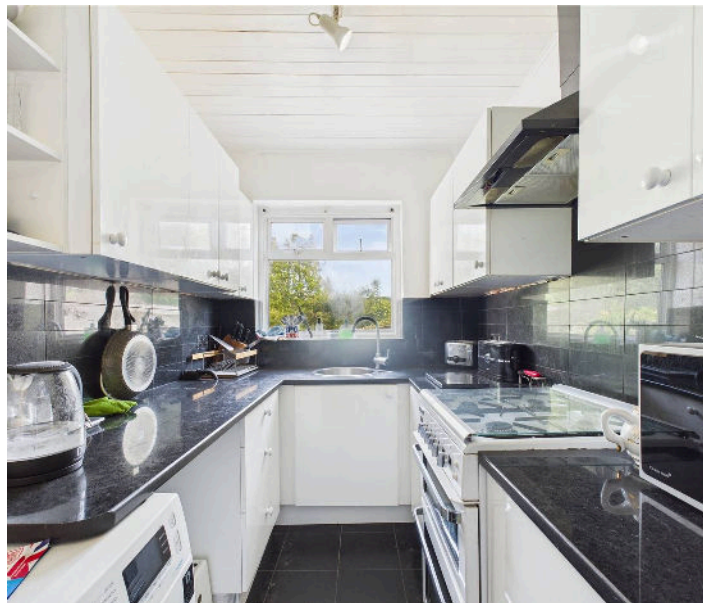
LAWRENCE RAND

Whitton Avenue West, Greenford
£620,000

443 Whitton Avenue West

- Three bedroom end of terrace house
- Master bedroom with ensuite
- Rear Garden
- Family bathroom
- Two receptions

This three bedroom end of terrace house is ideal for the growing family. With two receptions and a separate kitchen this home offers good size living accommodation set over two floors. To the first floor are two double bedrooms and a good size single. Completing the first floor is a fresh family bathroom. Whitton Avenue West is close proximity to a number of transport links including Sudbury Hill Piccadilly line station and Greenford Station. It is also within the catchment area for some highly desirable schools including Manderville.



Verified Information:

Council tax band: D

Local authority: London Borough of Ealing

Tenure: Freehold

Energy Performance Rating: D

Property construction: Standard form

Suppliers:

Electricity supply: Mains, Water supply: Mains water,
Sewerage: Mains

Heating: Gas central heating

Broadband & mobile coverage:

Broadband: FTTP (Fibre to the Premises)

Mobile coverage: O2 - Excellent, Vodafone - Excellent,
Three - Excellent, EE - Excellent

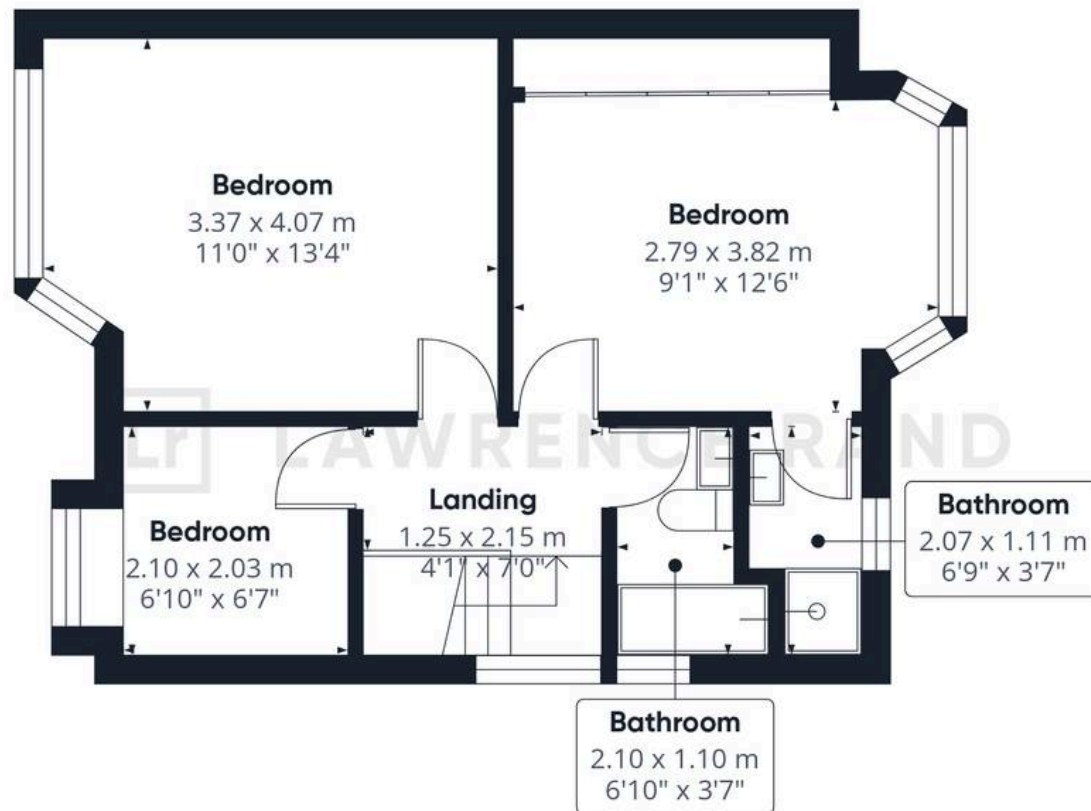
Disclaimer:

While we have endeavoured to provide accurate information, we advise prospective buyers to verify all key details with relevant professionals to ensure complete transparency. This property presents immense potential for development, and we encourage interested parties to explore the possibilities that await with this remarkable opportunity.





Ground Floor



Floor 1



Lawrence Rand

51 Victoria Road, Ruislip - HA4 9BH

01895 632211 • Info@lawrence-rand.co.uk • www.lawrence-rand.co.uk/