





## Key Features:

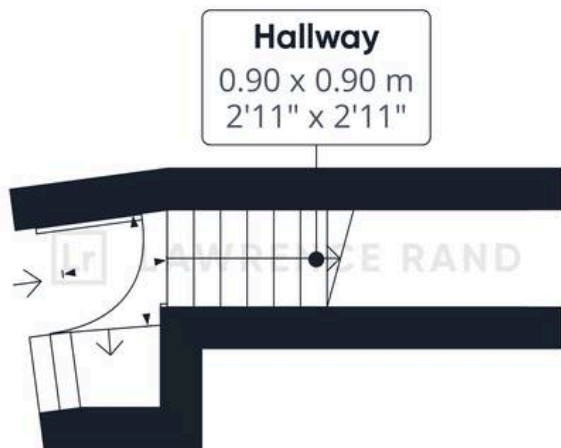
- Two bedroom first floor maisonette
- Private garden & own private entrance
- Modern kitchen
- Ideal investment opportunity
- Leasehold

This charming two double bedroom first floor maisonette offers a perfect blend of modern living and convenience. This maisonette boasts its own private entrance, ensuring privacy and a sense of exclusivity.

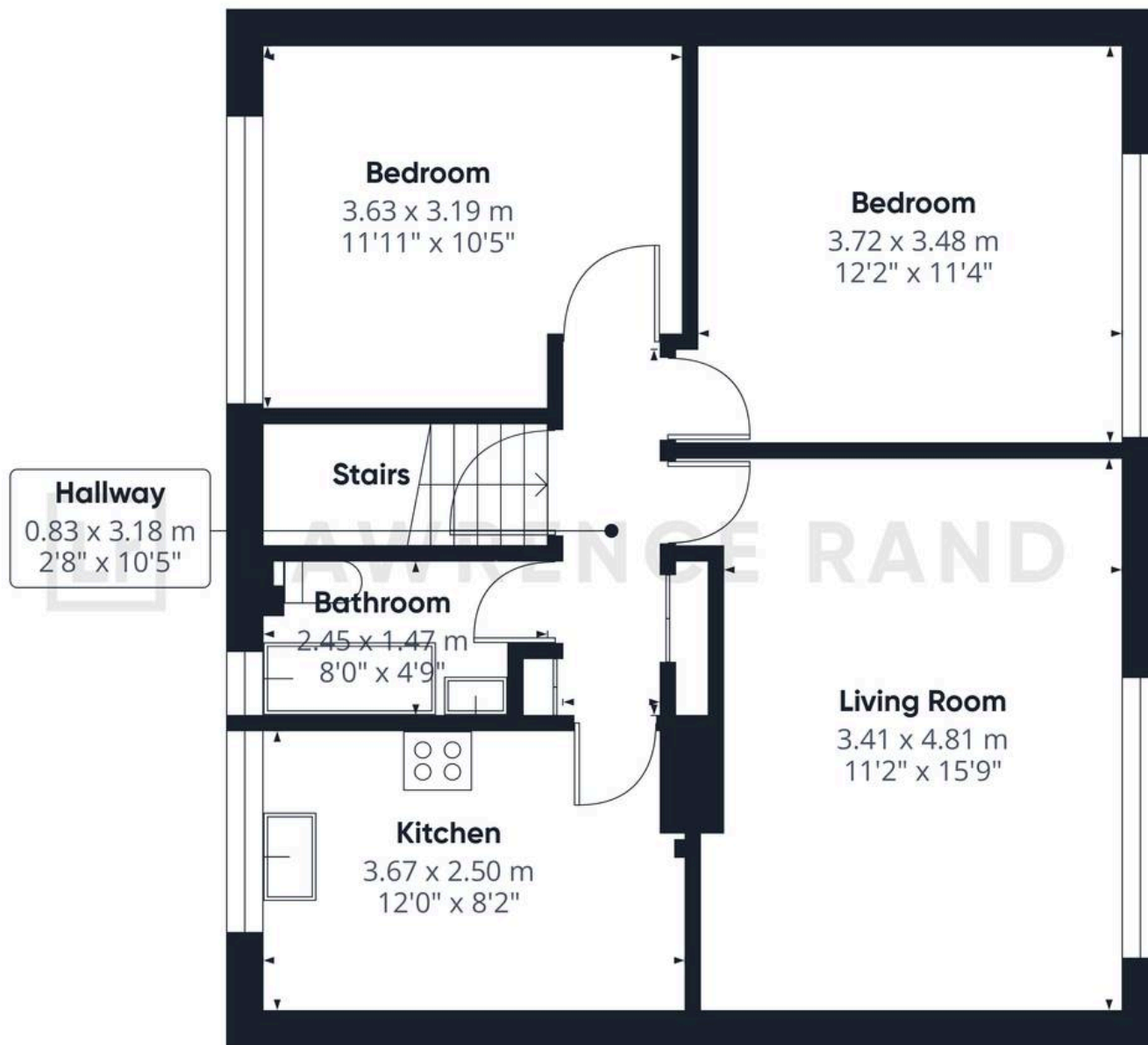
The property features two generously sized bedrooms, a bright living room, and a modern fitted kitchen and bathroom. Being a leasehold property, you can enjoy the benefits of homeownership without the hassle of maintaining the exterior of the building. With a private garden at your disposal, you can create your own outdoor sanctuary and enjoy al fresco dining or simply unwind in a tranquil setting.

Southbourne Gardens is centrally located between the great amenities of Ruislip Manor and Eastcote High Street, both boasting an array of shops, bars, restaurants and coffee shops. The Metropolitan/Piccadilly tube line runs from both, enjoying swift access into Central London, while for the motorist the A40/M25 is also close by providing taking you to both Central London and the Home Counties.





Ground Floor



Floor 1





## Lawrence Rand

51 Victoria Road, Ruislip - HA4 9BH

01895 632211 • [Info@lawrence-rand.co.uk](mailto:Info@lawrence-rand.co.uk) • [www.lawrence-rand.co.uk/](http://www.lawrence-rand.co.uk/)