



LAWRENCE RAND

East Mead, Ruislip
£540,000

Key Features:

- Three bedrooms
- Spacious
- South facing garden
- Potential to extend
- No chain

A three bedroom terraced house situated on this quiet residential road close to South Ruislip's multiple shopping and transport amenities with no onward chain.

The spacious property has accommodation comprising of; entrance hallway, through lounge, and kitchen. To the first-floor are landing area, three bedrooms and family bathroom. To the rear is a South-facing garden and a garage with rear access.

East Mead is a popular road within walking distance to the shopping and transport amenities of South Ruislip, which is on the Central and Main line, the Metropolitan/Piccadilly line is also accessible locally. For the motorist, there are excellent connections to central London via the M25 and the M40. Some of the areas sought after schools including St Swithun Wells is also within the catchment area.



Verified Material Information:

Local authority: Hillingdon

Council tax band: E

EPC Rating: C

Suppliers:

Electricity supply: Mains, Water supply: Mains water,
Sewerage: Mains

Heating: Gas central heating

Broadband & mobile coverage:

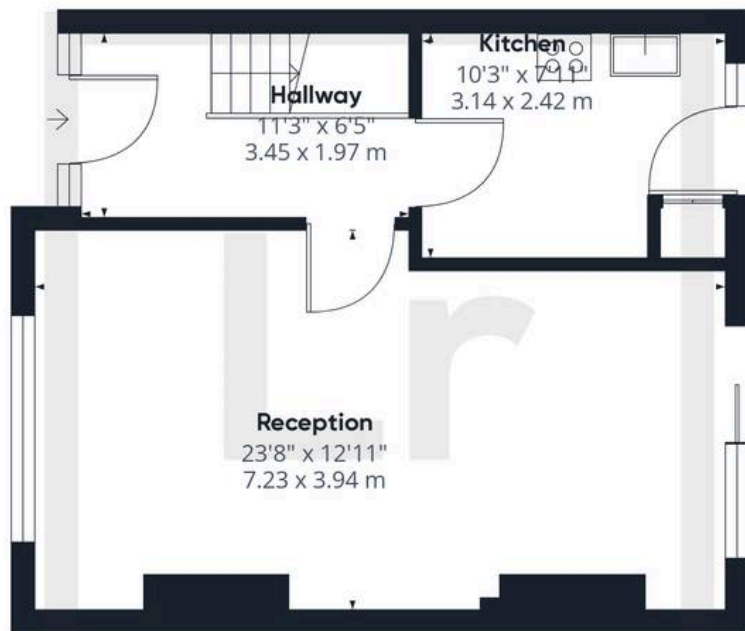
Broadband: FTTP (Fibre to the Premises)

Mobile coverage: O2 - Excellent, Vodafone - Excellent,
Three - Excellent, EE - Excellent

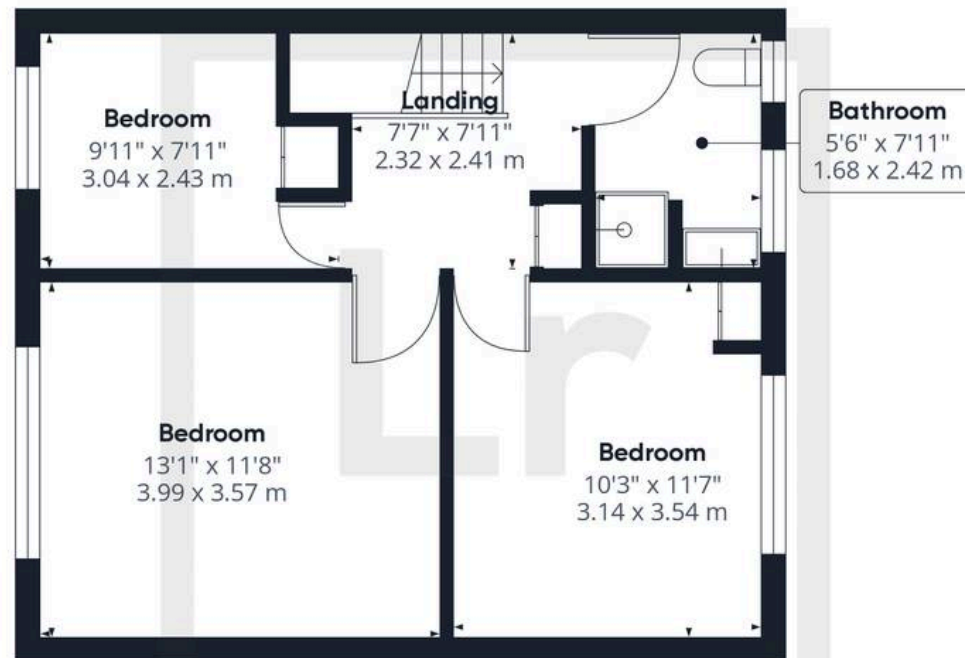
Disclaimer:

While we have endeavoured to provide accurate information, we advise prospective buyers to verify all key details with relevant professionals to ensure complete transparency. This property presents immense potential for development, and we encourage interested parties to explore the possibilities that await with this remarkable opportunity.

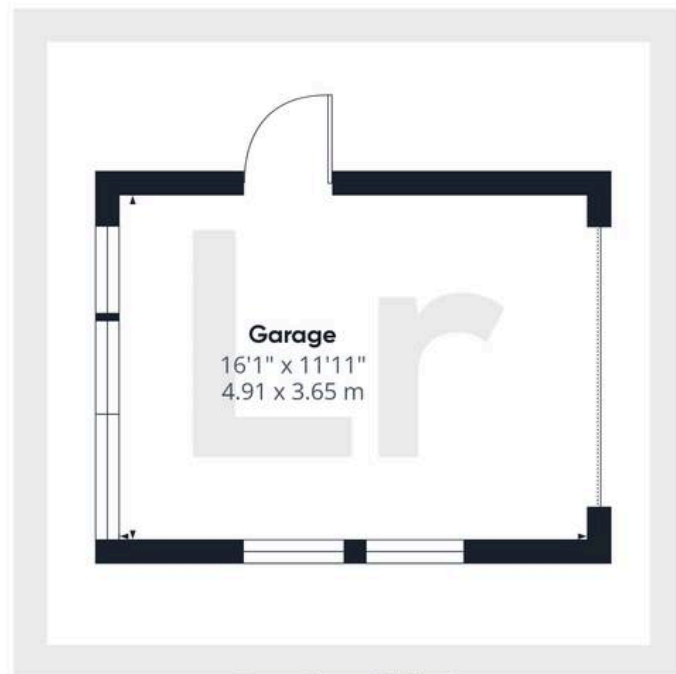




Ground Floor Building 1



Floor 1 Building 1



Ground Floor Building 2



Lawrence Rand

51 Victoria Road, Ruislip - HA4 9BH

01895 632211 • Info@lawrence-rand.co.uk • www.lawrence-rand.co.uk/